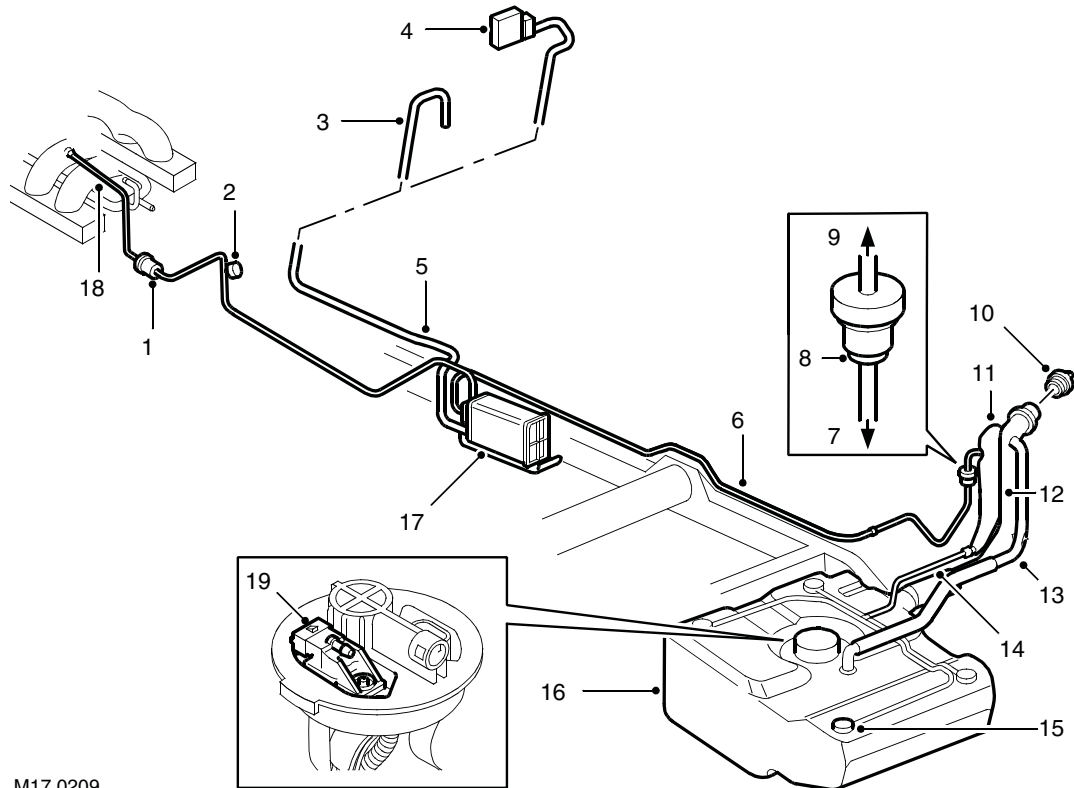




Evaporative emission system component layout



M17 0209

- | | |
|--|--|
| <p>1 Purge valve</p> <p>2 Service port</p> <p>3 Snorkel tube (UK / ROW only)</p> <p>4 CVS unit (NAS vehicles with vacuum type leak detection only)</p> <p>5 EVAP canister breather tube</p> <p>6 Vent pipe – fuel tank to EVAP canister</p> <p>7 Relief valve regulated flow</p> <p>8 Relief valve (UK / ROW only)</p> <p>9 Relief valve free flow</p> <p>10 Fuel filler cap</p> <p>11 Liquid vapour separator # (UK / ROW type shown)</p> | <p>12 Fuel filler hose (UK / ROW type shown)</p> <p>13 Tank breather hose (UK / ROW only)</p> <p>14 Vent hose</p> <p>15 Roll over valves (ROV's) – (4 off, UK / ROW spec. shown)</p> <p>16 Fuel tank and breather assembly</p> <p>17 EVAP canister</p> <p>18 Purge line connection to engine manifold</p> <p>19 Tank EVAP system pressure sensor (NAS vehicles with vacuum type leak detection only)</p> |
|--|--|