

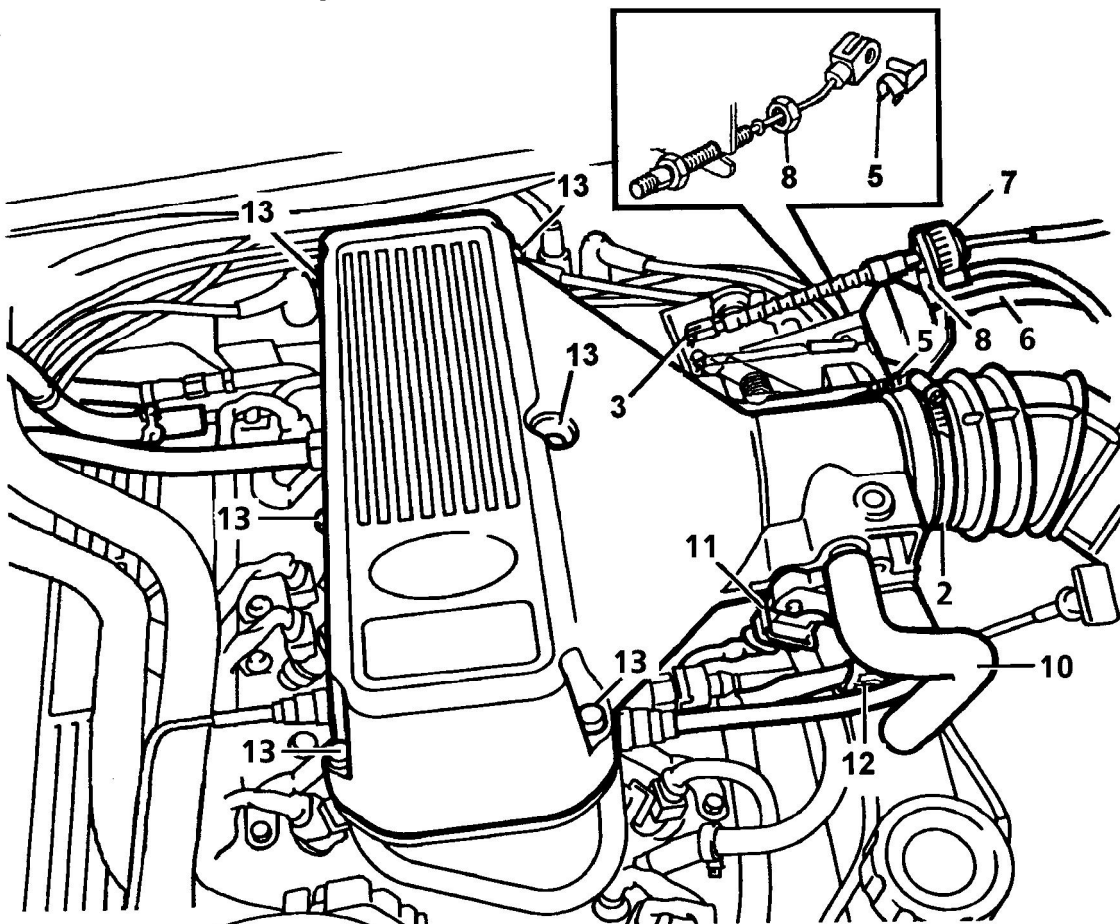


PLENUM CHAMBER

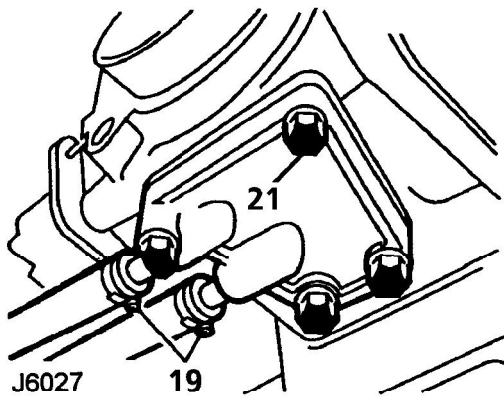
Service repair no - 19.22.46

Remove

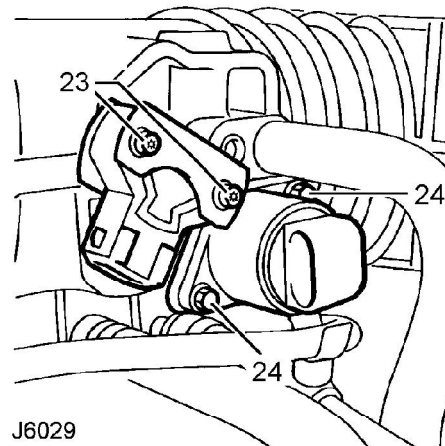
1. Disconnect battery negative lead.
2. Slacken clip securing intake hose to plenum chamber and release hose.
3. Remove split pin from throttle cable clevis pin.
4. Remove clevis pin.
5. Release and remove kick down cable clevis pin.
6. Disconnect vacuum hose from cruise actuator.
7. Release throttle cable from abutment bracket.
8. Remove front locknut from kick down cable.
9. Release cable from bracket.
10. Disconnect breather hose from plenum.
11. Release clip and disconnect multiplug from throttle position sensor (TP Sensor).
12. Disconnect multiplug from idle air control (IAC).
13. Remove 6 bolts securing plenum chamber.
14. Release plenum chamber from ram pipe housing.
15. Fit approved hose clamp to water jacket coolant hoses.
16. Tighten clamp.
17. Position cloth to absorb coolant spillage.
18. Slacken clips securing coolant hoses to plenum.



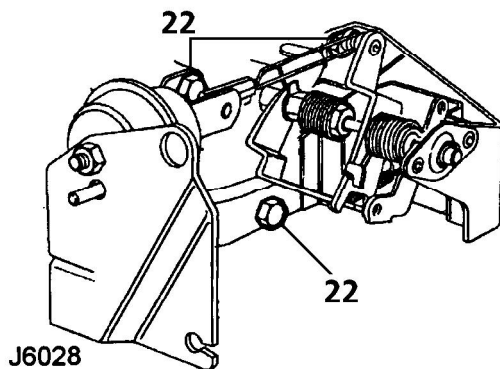
J6026



- 19. Disconnect hoses and remove plenum chamber.
- 20. Place cloth over ram pipes to prevent ingress of foreign matter.
- 21. Remove 4 bolts securing water jacket to plenum chamber. Remove water jacket. Remove gasket and discard.



- 23. Remove 2 Torx bolts securing TP sensor. Collect clamp plate. Remove TP sensor.
- 24. Remove 2 bolts securing IAC. Remove motor. Remove gasket and discard.



- 22. Remove 3 bolts securing throttle linkage bracket to plenum chamber. Remove bracket. Collect return spring.