

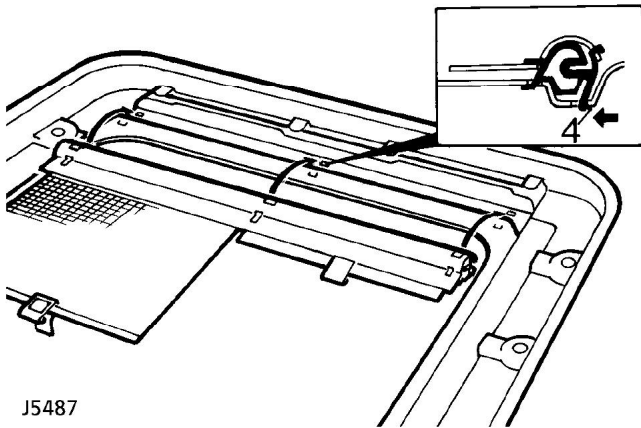


SUN BLIND ASSEMBLY

Service repair no - 76.82.78

Remove

1. Open sunroof to the tilt position.
2. Remove the trim finisher from the sunroof surround.
3. Release the headlining locally to access under clamping frame of the sunroof.
4. Lever forward and upward the rear leg of 3 retaining clips to release sun blind roll assembly.



J5487

Refit

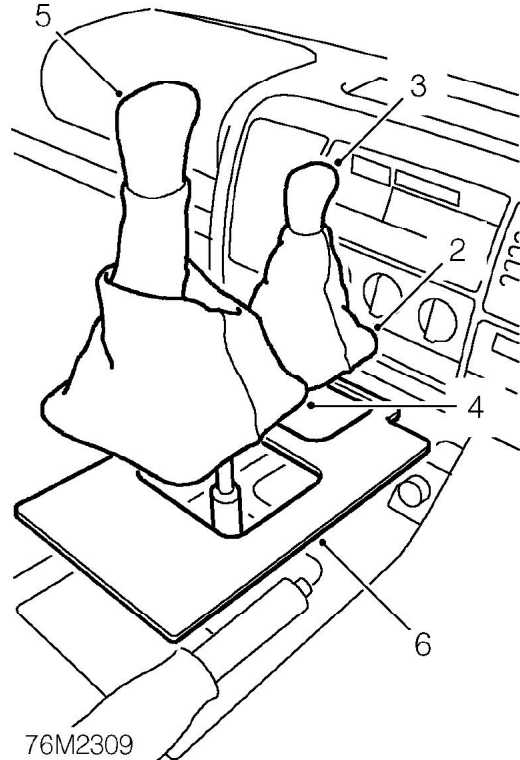
5. Ensure front leg of retaining clips are located.
6. Push in rear leg of retaining clip.
7. Reverse removal procedure.

CENTRE CONSOLE

Service repair no - 76.52.02

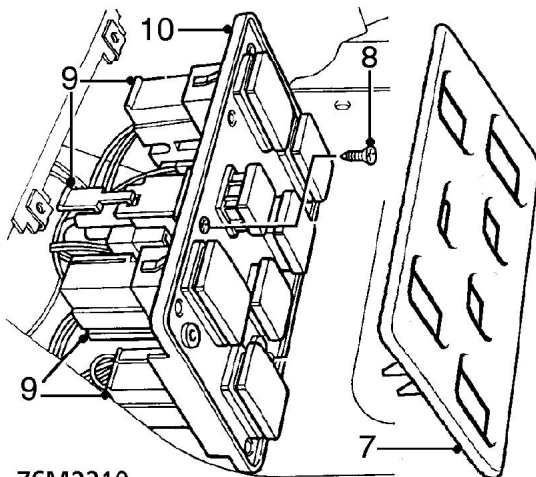
Remove

1. Disconnect battery earth lead.



76M2309

2. Release transfer gear lever gaiter from console.
3. Remove transfer gear lever gaiter and knob assembly.
4. Release gear selector lever gaiter from centre console.
5. Remove gear selector lever gaiter and knob assembly.
6. Remove centre console rubber mat.



76M2310

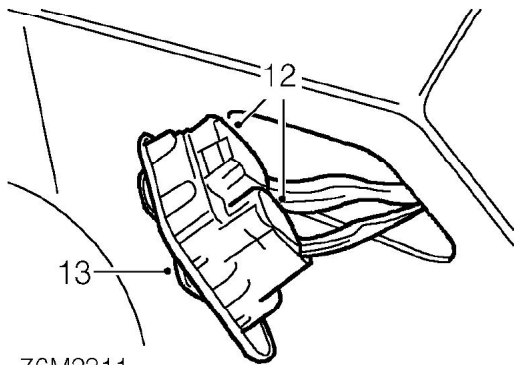
7. Remove centre console switch pack cover.
8. Remove 4 screws securing switch pack to console.
9. Release switch pack from console and disconnect 7 multiplugs.



NOTE: If the 'Cold Pack' option is not fitted there will only be 5 switches in pack.

10. Remove switch pack.

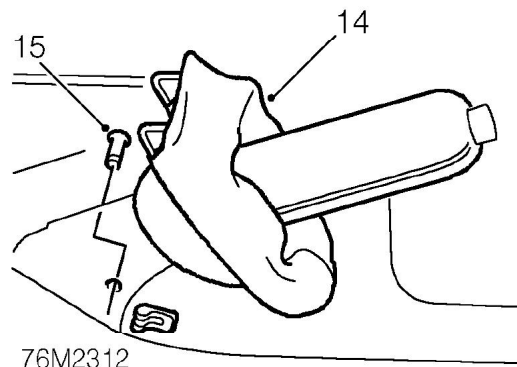
Models fitted with electric front seats



76M2311

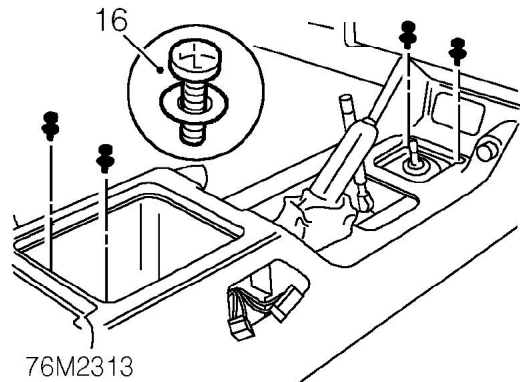
11. Release electric front seat switches from centre console.
12. Disconnect 2 multiplugs from each switch.
13. Remove switches.

All models



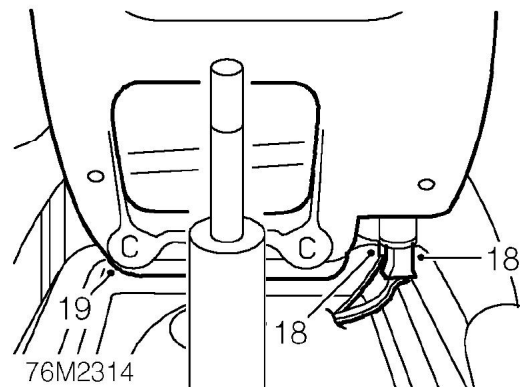
76M2312

14. Release hand brake lever gaiter from centre console.
15. Remove clip and clevis pin securing cable to hand brake lever.



76M2313

16. Remove 4 screws securing centre console to body.
17. Raise hand brake lever, pull centre console rearwards to gain access to cigar lighter multiplug and illumination bulb Lucar.



76M2314

18. Disconnect cigar lighter multiplug and illumination bulb Lucar.
19. Remove centre console assembly.



Refit

20. Position centre console assembly, ensuring harnesses and connectors are not trapped and are routed to their correct locations.
21. Connect cigar lighter multiplug and illumination bulb Lucar.
22. Align centre console to body fixings and fascia.
23. Fit and tighten screws securing centre console to body.
24. Lubricate hand brake lever to cable clevis pin.
25. Align hand brake cable to lever, fit clevis pin and secure with clip.
26. Secure hand brake lever gaiter to centre console.

Models fitted with electric front seats

27. Position electric front seat switches, connect multiplugs and secure to centre console.

All models

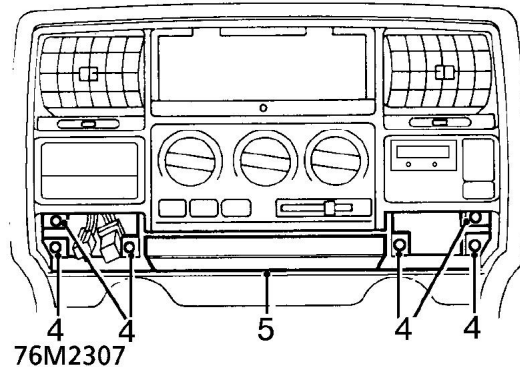
28. Position centre console switch pack and connect multiplugs to switches.
29. Align switch pack to centre console and secure with screws.
30. Fit centre console switch pack cover.
31. Fit centre console rubber mat.
32. Fit gear selector lever knob and secure gaiter.
33. Fit transfer gear lever knob and secure gaiter.
34. Reconnect battery earth lead.

DRINKS TRAY

Service repair no - 76.46.41

Remove

1. Disconnect battery negative lead.
2. Remove ash tray. **See ash tray - dash panel central louvre panel.**
3. Remove switch pack. **See switch pack - dash panel central louvre panel.**



4. Remove 6 screws securing drinks tray to dash panel central louvre panel.
5. Remove drinks tray.

Refit

6. Position drinks tray to dash panel central louvre panel and secure with screws.
7. Fit switch pack. **See switch pack - dash panel central louvre panel.**
8. Fit ash tray. **See ash tray - dash panel central louvre panel.**
9. Connect battery negative lead.