

## SENSORS - FRONT

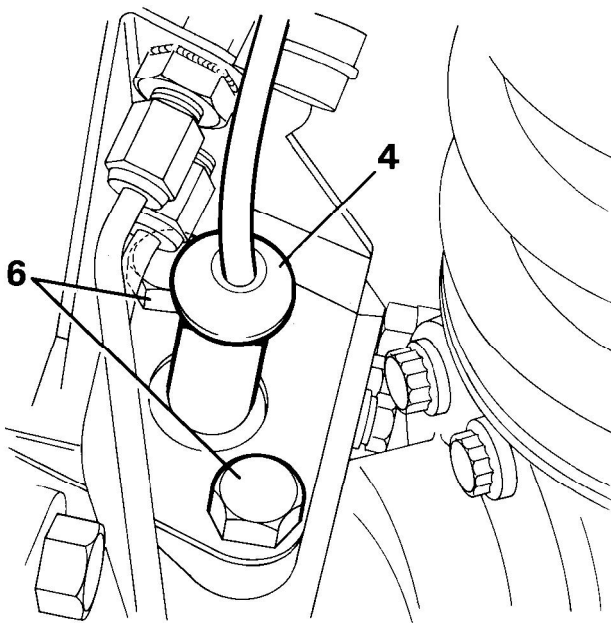
Service repair no - 70.65.32



**CAUTION:** If a sensor is removed for any reason, a **NEW** sensor bush and seal must be fitted.

### Remove

1. Disconnect battery negative lead.
2. Disconnect required sensor electrical connection, located on inner wing [fender] panel.
3. Remove sensor lead from clips.
4. Clean area surrounding sensor to prevent ingress of dirt. Using a suitable lever pry sensor from mounting bush.



RR2752M

5. Release harness cable ties, remove sensor lead from vehicle.
6. Remove top swivel retaining bolts complete with brake jump hose and sensor seal. Remove sensor bush.

### Refit

7. Insert new sensor bush and seal.
8. Refit brake jump hose bracket, coat bolts with Loctite 270.
9. Lightly coat new sensor using EP 90 oil. Push sensor through bush until it contacts exciter ring. Sensor will be 'knocked back' to correct position when vehicle is driven.
10. Secure sensor lead in original position.
11. Reconnect sensor electrical connection.
12. Drive vehicle to ensure ABS warning light is extinguished.

## SENSOR RINGS

The rear sensor ring is assembled to the rear brake disc to form part of the rear hub assembly. **See REAR AXLE AND FINAL DRIVE, Repair, Rear Hub Assembly**

The front sensor ring is a toothed ring on the axle shaft which forms part of the front stub axle assembly. **See FRONT AXLE AND FINAL DRIVE, Overhaul, Front Stub Axle, Constant Velocity Joint and Swivel Pin Housing ABS**