

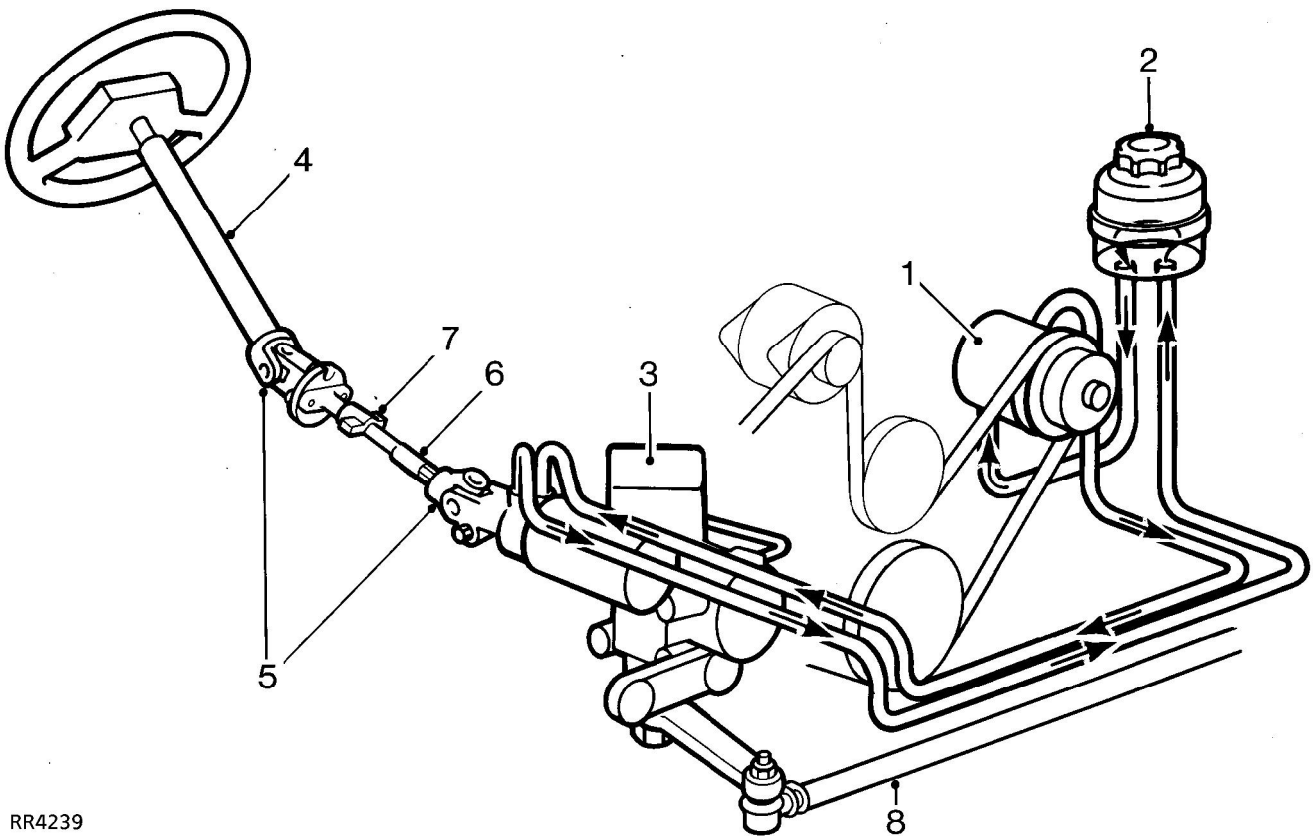


**DESCRIPTION**

The power assisted steering system incorporates a compression joint in the lower shaft, designed to collapse on impact and for certain countries, an air bag located in the centre of the steering wheel. The mis-alignment of the upper steering column with the steering box and the inclusion of two universal joints and a compression joint in the lower shaft, is also designed to prevent frontal impact moving the column toward the driver. The steering box is located behind the first cross member of the chassis and is connected to the road wheels by the drag link and track rod. An hydraulic damper absorbs shocks in the steering, caused by road wheel deflections when operating on rough terrain.

**Power steering system**

The power steering system comprises a hydraulic pump which is belt driven from the engine and supplied with fluid from a reservoir that also acts as a cooler. The steering box houses a self neutralizing rotary valve which is part of the worm/valve assy and a hydraulic piston/rack to assist the mechanical operation. The rotary valve which is operated by movement of the steering wheel, directs fluid pressure to the appropriate side of the hydraulic piston/rack to provide assistance.



RR4239

**Power steering system**

- 1. Hydraulic pump
- 2. Fluid reservoir
- 3. Steering box
- 4. Upper column
- 5. Universal joints
- 6. Lower shaft
- 7. Compression joint
- 8. Drag link