


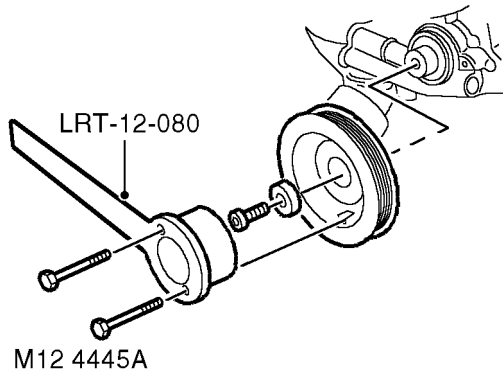


Seal - cover - timing gears

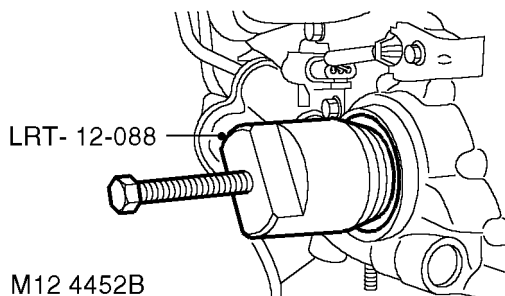
➔ 12.65.05

Remove

1. Remove auxiliary drive belt.
 **CHARGING AND STARTING, REPAIRS, Belt - auxiliary drive.**



2. Secure tool **LRT-12-080** to crankshaft pulley with 2 bolts.
3. Remove crankshaft pulley bolt.
4. Remove crankshaft pulley.

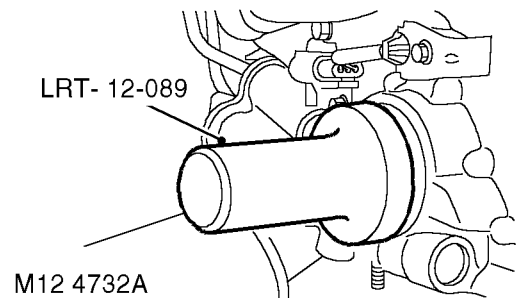



5. Use tool **LRT-12-088**, to remove oil seal from timing gear cover.

Refit

1. Clean seal register in timing gear cover and crankshaft pulley.
CAUTION: Seal is pre-greased, do not apply additional lubricant.

2. Apply smear of Retinax LX grease to seal running surface on crankshaft.



3. Fit seal to timing gear cover using tool **LRT-12-089**.
4. Fit crankshaft pulley bolt and tighten to 270 Nm (200 lbf.ft).
5. Remove tool **LRT-12-080** from crankshaft pulley.
6. Fit auxiliary drive belt.
 **CHARGING AND STARTING, REPAIRS, Belt - auxiliary drive.**