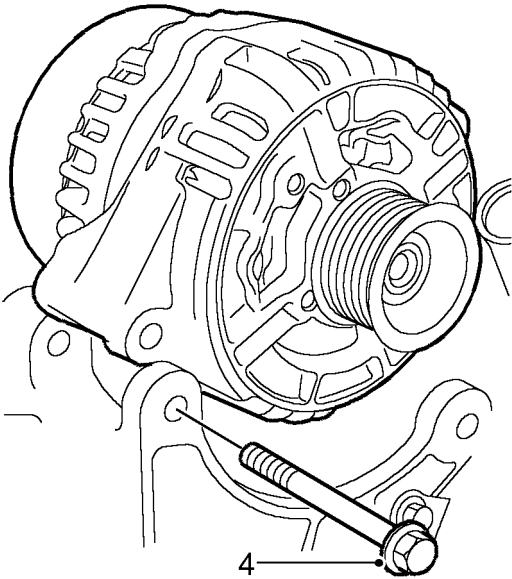


## Sensor - engine coolant temperature (ECT)

➤ 18.30.10

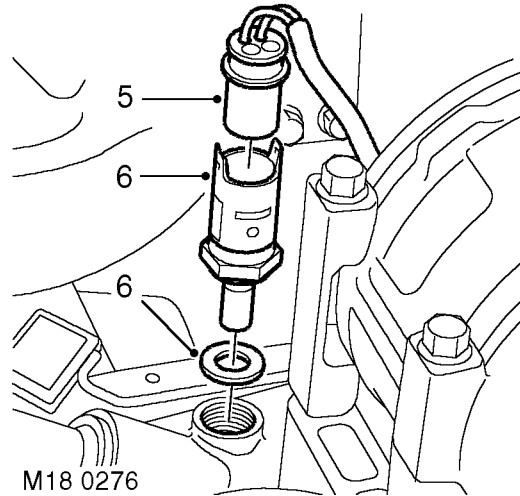
### Remove

1. Release turnbuckles and remove battery cover.
2. Disconnect battery earth lead.
3. Remove auxiliary drive belt.  
👉 **CHARGING AND STARTING, REPAIRS, Belt - auxiliary drive.**



M18 0275

4. Remove 2 bolts securing alternator, release alternator from support bracket and position aside.



5. Disconnect multiplug from ECT sensor.
6. Remove sensor from inlet manifold and discard sealing washer.

### Refit

1. Clean sealant from threads in manifold.
2. Apply sealant, Part No. STC 50552 to sensor threads.
3. Fit new sealing washer to ECT sensor and tighten sensor to 10 Nm (7 lbf.ft).
4. Connect multiplug to ECT sensor.
5. Position alternator, fit bolts and tighten to 45 Nm (33 lbf.ft).
6. Fit auxiliary drive belt.  
👉 **CHARGING AND STARTING, REPAIRS, Belt - auxiliary drive.**
7. Top up cooling system.
8. Connect battery earth lead.
9. Fit battery cover and secure with fixings.