

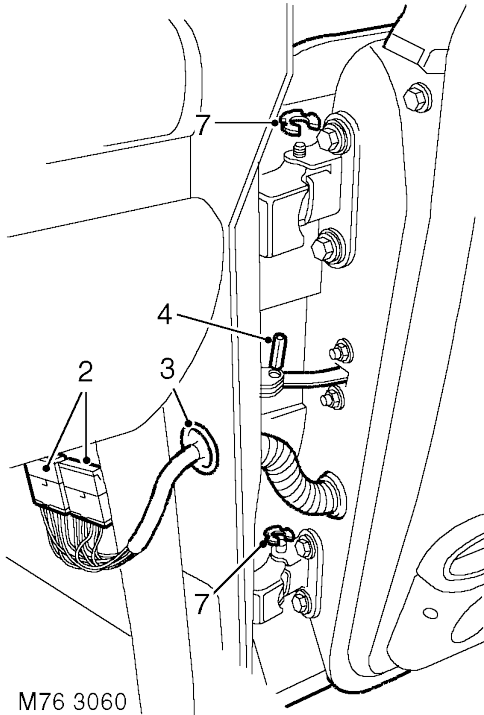


## Door - front

↔ 76.28.01.99

### Remove

1. Release 'A' post lower trim and position aside.



2. Release and disconnect multiplugs from lower 'A' post.
3. Release harness sleeve and pull harness through 'A' post.
4. Remove roll pin from door check strap.
5. Release check strap from 'A' post.
6. Discard roll pin.
7. Remove 2 'C' clips from door hinges.
8. With assistance raise and remove door.

### Refit

1. With assistance position door to hinges.
2. Fit 'C' clips to hinge pins.
3. Position check strap to 'A' post and secure with new roll pin.
4. Feed door harness through 'A' post.
5. Connect and secure multiplugs at lower 'A' post.
6. Connect harness sleeve to 'A' post and door.
7. Fit 'A' post finisher.
8. Check door for flush fit to adjacent panels and door edges for equal gap. If adjustment is necessary:
  - a Open door
  - b Place a wooden block on jack and position jack to support door lower edge.
  - c Loosen 4 bolts securing hinges to door.
  - d Loosen 2 Torx bolts securing door latch striker.
  - e Use jack to assist with door alignment.
  - f Tighten hinge bolts.
  - g Remove jack, close door and check for correct alignment.
  - h When alignment is correct, tighten door hinge bolts to 30 Nm (22 lbf.ft).
  - i Adjust door latch striker and tighten Torx bolts to 26 Nm (19 lbf.ft).