



## Power steering box - V8

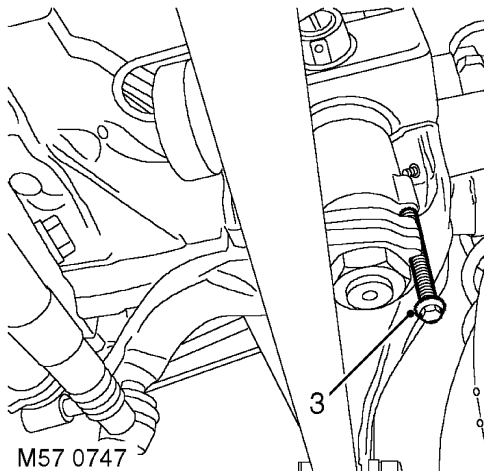
🔑 57.10.01

### Remove

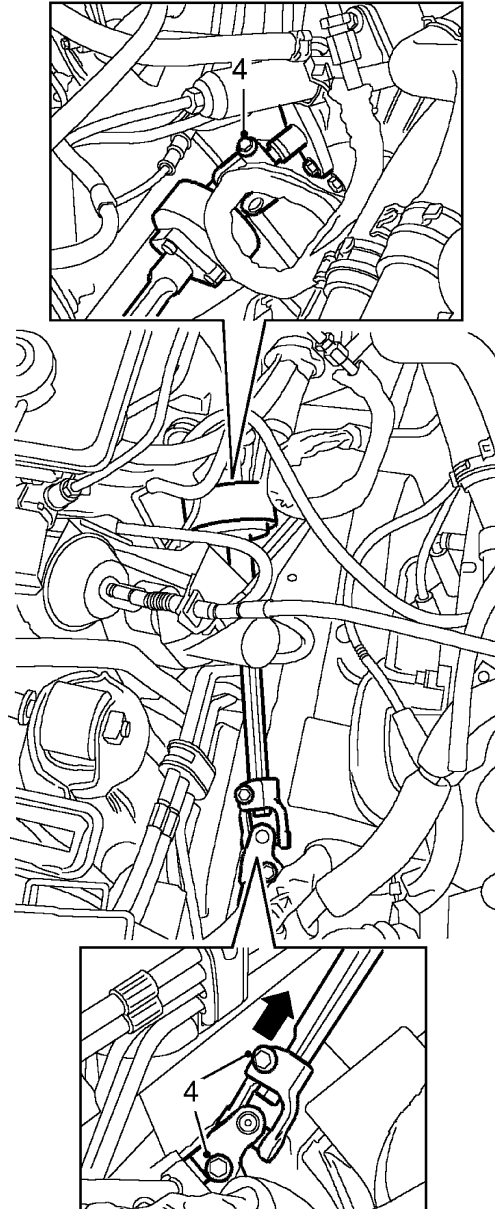
1. Raise front of vehicle.

**WARNING: Do not work on or under a vehicle supported only by a jack. Always support the vehicle on safety stands.**

2. Remove front road wheel.



3. Ensure steering wheel is centralised and fit centralising bolt to steering box. Remove key from steering lock and engage column lock.

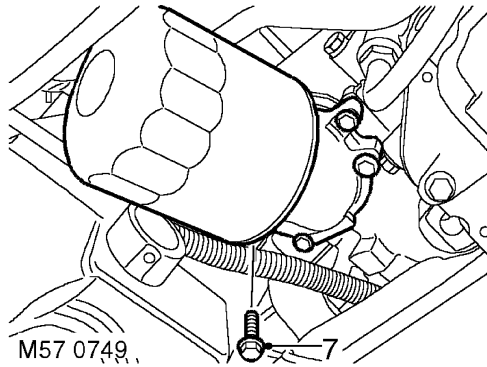


4. Remove 3 bolts securing intermediate shaft and universal joint.
5. Push intermediate shaft upwards, release and remove universal joint.

**CAUTION: Do not turn the steering wheel with the intermediate shaft or universal joint disconnected as damage to the rotary coupler and the steering wheel switches may occur.**

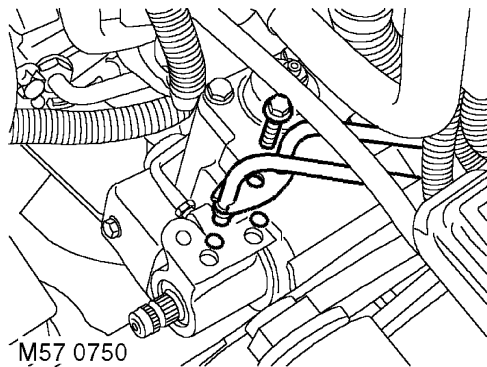
6. Position container to catch oil spillage.

# STEERING



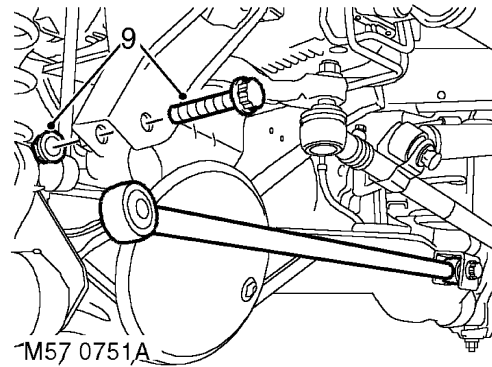
7. **RH drive models:** Remove 4 bolts securing oil filter housing, remove housing and discard 'O' ring.

**CAUTION:** Always fit plugs to open connections to prevent contamination.

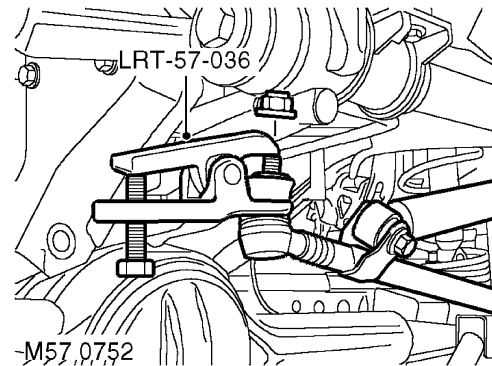


8. Remove bolt securing PAS pipe bracket to steering box, release pipes and discard 'O' rings.

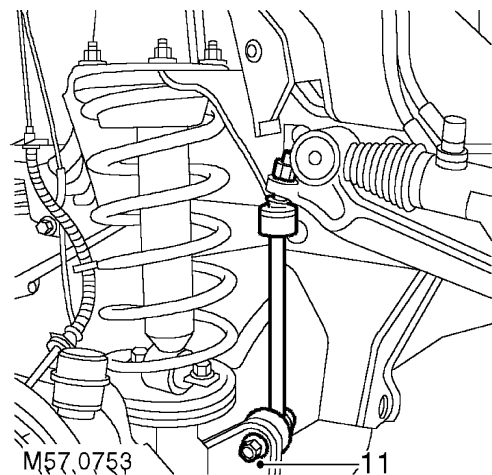
**CAUTION:** Always fit plugs to open connections to prevent contamination.



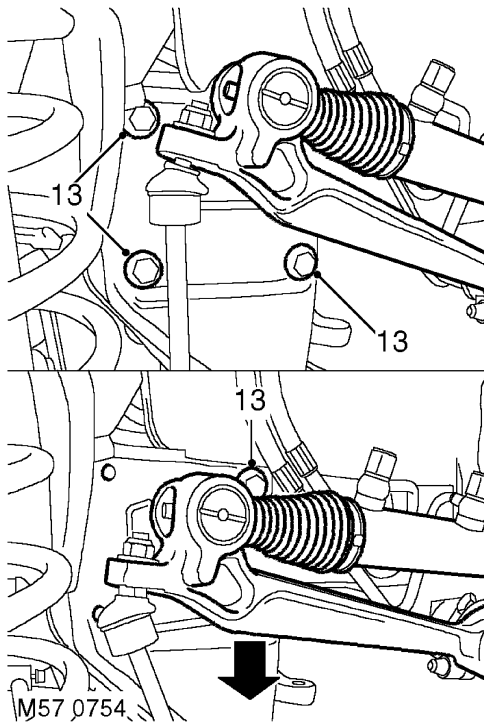
9. Remove securing nut and bolt and release Panhard rod.



10. Remove nut securing drag link to drop arm. Using **LRT-57-036**, break taper joint and release drag link.



11. **RH drive models with ACE:** Remove nut securing anti-roll bar link lower ball joint and release joint.



12. **RH drive models with ACE:** Position ACE control arms to access steering box bolts.
13. With assistance remove 4 securing bolts and remove steering box.
14. Remove centralising bolt from steering box.

#### Refit

1. Fit centralising bolt to steering box.
2. With assistance, position steering box, fit bolts and tighten to 90 Nm (66 lbf.ft).
3. **RH drive models with ACE:** Ensure washer is in place on lower ball joint of anti-roll bar link, then connect lower ball joint to axle. Tighten nut to 100 Nm (74 lbf.ft).
4. Position drag link, fit nut and tighten to 80 Nm (59 lbf.ft).
5. Position Panhard rod, fit bolt and nut and tighten to 230 Nm (170 lbf.ft).
6. Clean PAS pipe ends and 'O' ring recess.
7. Lubricate new 'O' rings for PAS pipes with clean PAS fluid.
8. Fit 'O' rings to PAS pipes and position pipes in steering box. Fit PAS pipe bracket and tighten bolt to 22 Nm (16 lbf.ft).
9. **RHD models:** Fit oil filter and housing:
  - Clean oil filter housing and engine mating faces.
  - Lubricate new 'O' ring with clean engine oil and fit to housing.
  - Position oil filter housing and tighten bolts to 9 Nm (7 lbf.ft).
10. Ensure steering wheel is centralised. Fit universal joint between steering box and intermediate shaft and tighten bolts to 25 Nm (18 lbf.ft).
11. Remove centralising bolt from steering box.
12. Fit road wheel(s) and tighten nuts to 140 Nm (103 lbf.ft)..
13. Remove stand(s) and lower vehicle.
14. Check and top up engine oil.
15. Bleed PAS system.
  - ☞ **STEERING, ADJUSTMENTS, Hydraulic system - bleed.**
16. Centralise steering linkage
  - ☞ **STEERING, ADJUSTMENTS, Steering linkage - centralise.**