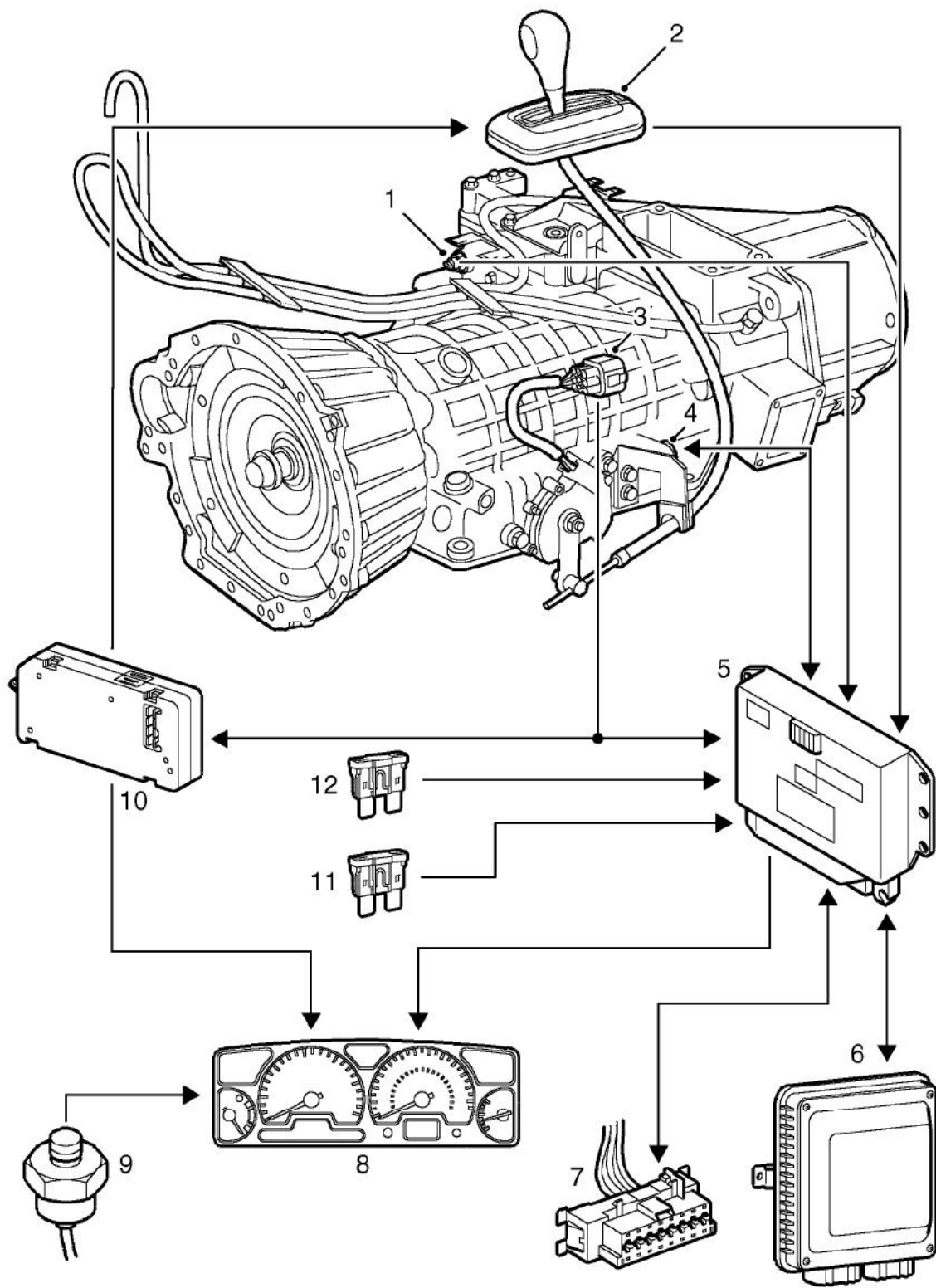


Control schematic



M44 1740



- 1 Transmission high/low switch
- 2 Mode switch
- 3 Gear position switch connector
- 4 Solenoid valve/speed sensor connector
- 5 Electronic automatic transmission ECU
- 6 Engine control module
- 7 Diagnostic socket
- 8 Instrument pack
- 9 Transmission fluid temperature sensor
- 10 Body control unit
- 11 Battery power supply
- 12 Ignition power supply