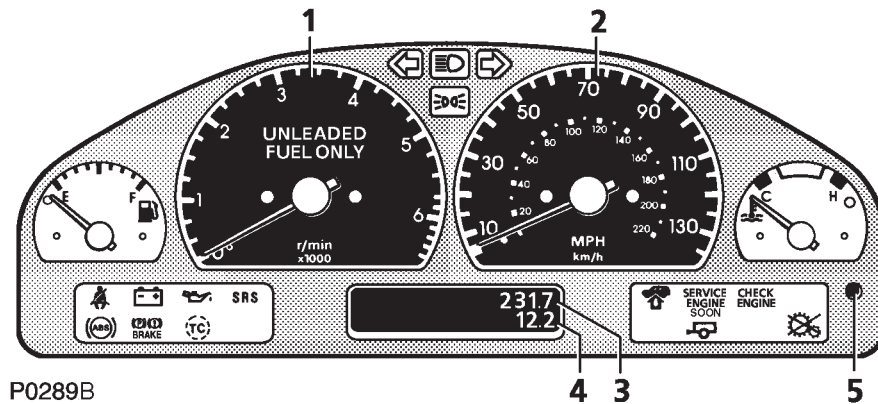


## Instruments

---



### 1. Tachometer

Indicates engine speed in revolutions per minute.

Your vehicle is fitted with a system which automatically restricts the number of revolutions per minute once the engine's maximum 'governed' speed has been reached.

Engine speed restriction limit: 5,500 rpm

### 2. Speedometer

Indicates road speed in miles and/or kilometres per hour.

### 3. Total distance recorder

Indicates the total distance travelled by the vehicle. (Turn the starter switch to position II to illuminate display).

### 4. Trip recorder (trip 1)

Records individual journey distances (see also 'Trip computer'). (Turn the starter switch to position II to illuminate display).

### 5. Trip recorder reset button (trip 1)

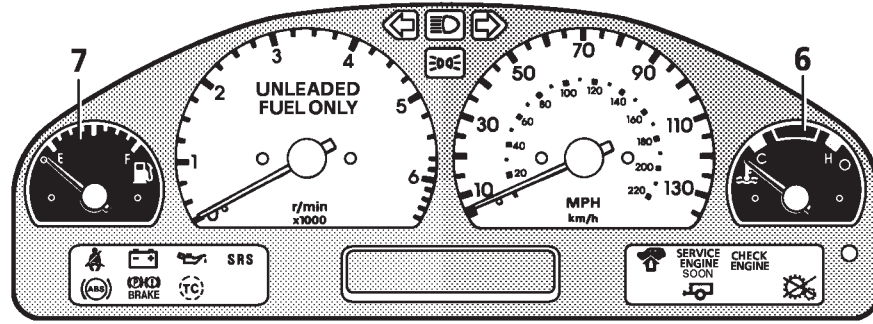
Press to return the trip recorder to zero.

### WARNING

**DO NOT attempt to open the instrument pack or change the instrument bulbs - warranty cover may be invalid if the pack has been tampered with.**

---

## Instruments



P0290B

### 6. Temperature gauge

Once the engine coolant has reached its normal operating temperature, the pointer should be almost vertical (the precise position will vary depending on the ambient temperature). If the pointer moves towards the RED segment, a RED warning light in the temperature gauge illuminates. Should the pointer move INTO the red segment, stop the vehicle as soon as safety permits and seek qualified assistance before continuing.

### 7. Fuel gauge

The pointer drops to zero when the starter switch is turned off, but quickly rises to show the level of fuel in the tank when the switch is turned to position 'II'. After refuelling, the gauge rapidly changes to reflect the increase of fuel in the tank.

**NOTE:** The gauge may not indicate fuel level increases of 4 US gallons (15 litres) or less.

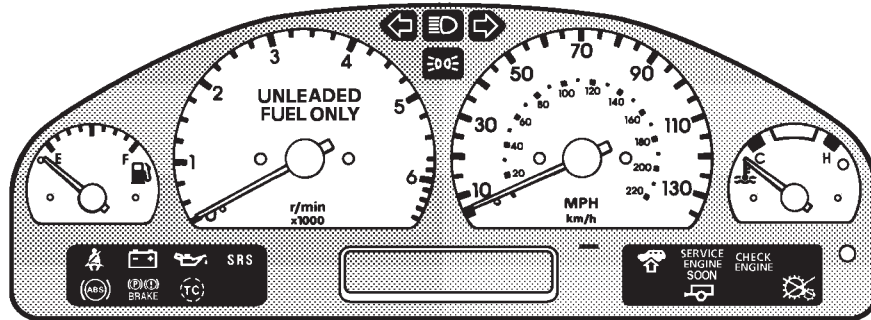
When the fuel remaining in the tank is a minimum of 2.4 gallons (9 litres), the AMBER warning light will illuminate. If the light illuminates, refuel at the first opportunity.

Fuel tank capacity is approximately 25 usable US gallons (93 litres).

### WARNING

**NEVER allow your vehicle to run out of fuel (the resultant misfire may destroy the catalytic converter).**

## Warning lights



P0291B

Some warning lights may also be accompanied by a message which will appear in the message centre display on the instrument pack. (see 'Message centre' for details).

The warning lights are colour coded as follows:

GREEN & BLUE lights indicate that a unit is operating.

AMBER & YELLOW lights are cautions.

RED lights are warnings.

### WARNING

**DO NOT drive if a RED warning light remains on once the engine is running or illuminates whilst driving.**



### Parking brake/brake system - RED.

Illuminates for 3 seconds as a bulb check when the starter switch is turned to position 'II' and also illuminates when the parking brake is applied and the starter switch is in position 'II'.

The light should extinguish when the parking brake is fully released or after the bulb check if the parking brake is off. If the light illuminates whilst driving, a fault is indicated. Stop the vehicle as soon as safety permits and seek qualified assistance before continuing.

**NOTE:** If the vehicle has been standing for some time, it may take up to 40 seconds before the light extinguishes (in this case, ABS and TC warning lights will also be illuminated).

## Warning lights

---



### Seatbelt - RED.

The light illuminates for 6 seconds when the starter switch is turned to position 'II'. ALWAYS fasten your seat belt BEFORE driving.



### Battery charging - RED.

Illuminates as a bulb check when the starter switch is turned to position 'II' and extinguishes when the engine is running. If it remains on, or illuminates when driving, a fault is indicated. Seek qualified assistance urgently.



### Trailer direction indicators - GREEN.

This light is only operative when a trailer is connected to the vehicle via a multi-pin socket. The light flashes in conjunction with the vehicle direction indicators, thus confirming that the trailer indicator lights are operating correctly. In the event of the failure of a trailer direction indicator light, the warning light will not illuminate.



### Low engine oil pressure - RED.

Illuminates as a bulb check when the starter switch is turned to position 'II', and extinguishes when the engine is running. If it remains on when the engine is started, or comes on during a journey, stop the vehicle as soon as safety permits and seek qualified assistance before continuing. Always check the oil level when this light illuminates.

**NOTE:** At very low ambient temperatures, the light may take several seconds to extinguish.



### Transfer gearbox - AMBER.

The light starts flashing when the selector lever is moved across the 'H-gate', and continues flashing until the transfer gearbox has completed a change from one range of gears to another.

DO NOT release the brakes or move the selector lever out of 'N' into one of the drive positions until the light stops flashing.



### ABS - YELLOW.

This light illuminates for approximately 1 second when the starter switch is turned to position 'II', and then briefly extinguishes before coming on again. The warning light will then remain illuminated until the vehicle is driven above approximately 5 mph (7 km/h). If the light does not extinguish and then illuminate again, then a fault has occurred with the ABS system and you should consult your Land Rover dealer at the earliest opportunity.

If the light remains illuminated once a speed of 5 mph (7km/h) has been reached, or subsequently illuminates whilst driving, a fault has been detected by the self-monitoring system. The message centre will display 'ABS FAULT'; this means that full ABS control may not be available, and you should consult your dealer at the earliest opportunity.



### Airbag SRS - RED.

The light illuminates when the starter switch is turned to position 'II', and extinguishes after approximately 8 seconds. If the light illuminates at any other time, a fault is indicated (see 'Airbag SRS'). Seek qualified assistance urgently.

## Warning lights

---



### **Traction control (TC) - AMBER.**

Illuminates for three seconds after the starter switch is turned on and the ABS and traction control systems have completed their self-checks.

Whilst driving, the TC light will illuminate (for a minimum of two seconds), whenever traction control is active; the light extinguishing as soon as traction control ceases. The light flashing (for at least ten seconds), indicates that the system has been over-used; it will be available again once the system components have cooled.

If the light illuminates continuously, a fault with the system is indicated; seek qualified assistance.



### **Direction indicators - GREEN.**

The left or right warning light flashes in time with the corresponding left or right direction indicators, whenever they are operated. A warning light flashing at twice the normal speed, indicates that a direction indicator bulb has failed (the message centre will indicate which bulb is faulty). If a trailer is connected and a rear indicator bulb fails, then the message will not be displayed. When the hazard switch is pressed, both warning lights will illuminate in conjunction with the indicator lights.



### **Headlight high beam - BLUE.**

This light illuminates whenever the high beam headlights are on.



### **Lights on - GREEN.**

This light illuminates when the sidelights and/or headlights are switched on. It will not illuminate when parking lights or headlight delay are in operation.



### **Air suspension - AMBER.**

Illuminates as a bulb check when the starter switch is turned on and remains illuminated until two seconds after the engine has started.

In addition, the light will illuminate whilst driving whenever 'High' or 'Extended' ride heights are selected, and also if a fault with the air suspension system is detected.

## Warning lights



### Check engine - AMBER

The engine management system on your Land Rover is controlled by a sophisticated engine control module which maintains optimum control of engine running and emission levels and monitors the operation of the sub systems and components.

The 'Check engine' indicator illuminates as a system check when the starter switch is turned to position 'II' and should extinguish when the engine is started.

If an engine operation or emissions problem is registered by the engine control module when the vehicle is being operated, the 'Check engine' indicator will illuminate.

#### If 'Check engine' illuminates, and the vehicle drives normally:

Contact your Land Rover dealer to schedule a service appointment at your earliest convenience - YOU MAY STILL DRIVE THE VEHICLE.

**NOTE:** An incorrectly fitted fuel filler cap may cause the Check Engine light to illuminate.

#### If 'Check engine' flashes and/or the vehicle does not drive normally:

Avoid high speeds and seek immediate assistance from your Land Rover dealer.



### Service engine soon - AMBER.

Illuminates briefly (for 3 seconds) as a bulb check when the starter switch is turned to position 'II'.

Illuminates continuously when the vehicle reaches 82,500 miles (130,000 km) approx. When this occurs, take the vehicle to a Land Rover dealer for a special emission related service to be carried out.

### AUDIBLE WARNINGS

#### Starter key warning.

An audible warning sounds if the key is left in the starter switch when the driver's door is opened, if the engine is not running. It will cease, as soon as the key is removed or the driver's door is closed.

This is accompanied by the message centre displaying 'IGNITION KEY IN'.

#### Lights on warning.

An audible warning (3 beeps) sounds if the driver's door is opened whilst the headlights or park lights are turned on and after the key is removed from the starter switch. It will cease as soon as the lights are switched off, or when the driver's door is closed. The warning is accompanied by the message centre displaying 'LIGHTS ON' or 'PARK LIGHTS'.

#### Driver's seat belt reminder.

A continuous audible warning sounds and the message centre displays 'SEAT BELT PLEASE' for a 6 second period, or until the seat belt is latched.

#### High/low range change warning

An audible warning will sound whilst a change from one gear range to another is attempted. The warning will cease, once the change is complete or cancelled.