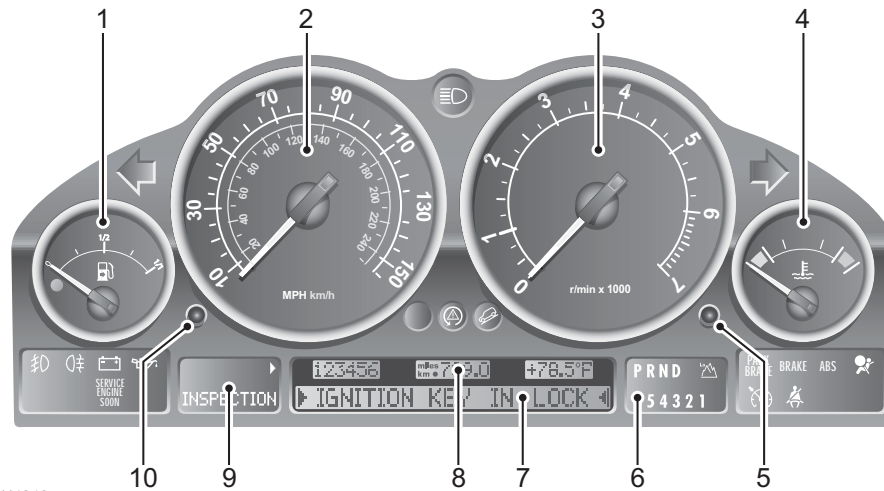


Instruments

INSTRUMENT PANEL



H4342

1. Fuel gauge

The pointer drops to zero when the starter switch is turned off, but quickly rises to show the level of fuel in the tank when the switch is turned to position 'II'. After refuelling, the gauge rapidly rises to reflect the increase of fuel in the tank.

When the fuel remaining in the tank is a minimum of 3 gallons (12 litres), the AMBER low fuel warning light in the fuel gauge illuminates. If the light illuminates, refuel at the first opportunity.

The small arrow visible in the fuel pump symbol on the gauge indicates the side of the vehicle on which the fuel filler is located - a useful reminder to help you position the vehicle on the correct side before refuelling.

CAUTION: NEVER allow vehicles to run out of fuel (the resultant misfire may destroy the catalytic converter).

2. Speedometer

Indicates road speed in miles and kilometres per hour.

3. Tachometer

Indicates engine speed in revolutions per minute (x 1000). In normal driving conditions the engine is most fuel efficient between 2000 and 3000 rev/min.

Instruments

4. Temperature gauge

Once the engine coolant has reached its normal operating temperature, the pointer will rise to a position midway between the RED and BLUE segments of the gauge (the precise position will vary according to climatic conditions).

If the pointer moves towards the RED segment, this indicates that the engine coolant is becoming too hot. Should the pointer move INTO the RED segment and the RED warning light within the gauge illuminates, severe engine damage could occur (under these circumstances, the air conditioning may switch off and engine performance may reduce in order to minimise engine load).

Stop the vehicle as soon as safety permits and switch off the engine and allow to cool down. If the problem persists, seek qualified assistance before continuing.

5. System check control

With the starter key NOT inserted, press and hold the control to check whether any system malfunctions have occurred. If faults exist, they will be listed in turn in the main message center until the control is released. If no malfunctions have occurred, 'CHECK CONTROL OK' is displayed. See '*MAIN MESSAGE CENTER*', page 76, for further information. Any messages will also be displayed during driving and when the starter switch is turned off.

This control button is also used in conjunction with the Service Interval Indicator, see '*SERVICE INTERVAL INDICATOR*', page 81.

6. Gear selector position display

This shows the current gear lever position and indicates when low range has been selected. See '*GEAR SELECTOR DISPLAY*', page 81, for further information.

7. Main message center

Displays all warning and information messages submitted by the vehicle systems. For further information concerning messages and their meanings, refer to '*MAIN MESSAGE CENTER*', page 76.

8. Total distance (odometer) and trip recorder

With the starter switch turned to position 'II', the display indicates the total distance travelled by the vehicle, and also shows the most recent individual journey distance. In some markets, the display can be set to show either miles or kilometres. To convert from one to another, press and hold the trip recorder reset button for more than two seconds.

9. Service Interval Indicator

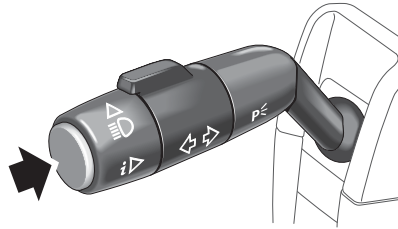
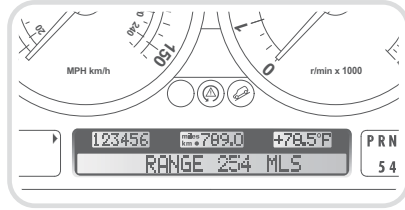
This briefly shows a countdown to the next oil service or inspection, when the starter switch is turned on. See '*SERVICE INTERVAL INDICATOR*', page 81, for further information.

10. Trip recorder reset button

Press briefly to return the trip recorder display to zero.

Trip Computer

TRIP COMPUTER - FUNCTION SELECTION



H4347

The trip computer utilises the message center in the instrument pack and provides useful information to assist the driver to calculate fuel stops, journey times and distances.

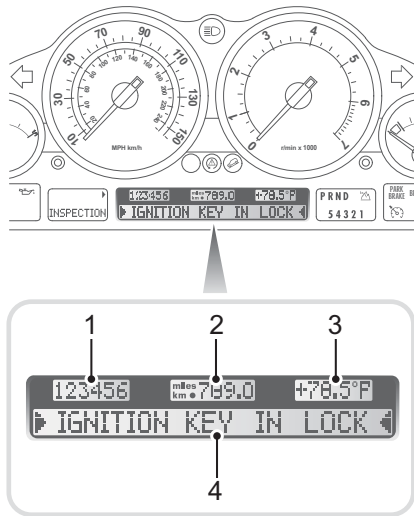
When the starter switch is in position 'II', the different trip computer statistics can be viewed in turn by pressing the button on the end of the direction indicator stalk repeatedly until the relevant statistic is displayed. The statistics are displayed in the following order:

- Speed limit.
- Distance (from destination).
- Range.
- Estimated time of arrival.
- Date.
- The current time.
- Stopwatch.
- Fuel consumption 1.
- Fuel consumption 2.
- Average speed.

The driver has the option to select which of the above functions are displayed and also in which order. For further information, consult your *'Audio & Navigation'* Handbook.

Message Centers

MAIN MESSAGE CENTER



H4344

1. Digital odometer. Displays the total distance travelled by the vehicle.
2. Trip recorder. Displays the distance travelled in miles or kilometres for individual journeys.
3. External temperature display.
4. Warning message and information display.

Driver warning and information messages are displayed in the message center. Messages have different priority levels and are grouped into the following categories.

Messages are displayed when a fault is detected and also when the starter switch is turned off. It is also possible to view messages for up to 3 minutes after the key has been removed from the starter switch, by pressing the system check control switch.

Warning messages

All warning messages are accompanied by an audible warning; however, there are two levels of warning.

A critical warning message is displayed continuously while the starter switch is turned on and is flanked by flashing arrows. It will remain displayed while the fault persists.

A non-critical warning is displayed for approximately 20 seconds, reducing to a minimum of 2 seconds if other warning messages are pending.

DO NOT ignore warning messages.

TAKE CORRECTIVE ACTION IMMEDIATELY (see 'WARNING & INFORMATION MESSAGES', page 77).

Information messages

Information messages will be displayed as and when applicable, and also when the starter switch is turned on or off. Where the message requires action by the driver - TAKE CORRECTIVE ACTION AS SOON AS POSSIBLE, (see 'WARNING & INFORMATION MESSAGES', page 77).

Message Centers

WARNING & INFORMATION MESSAGES

Warnings and information messages appear in the Message Center in order of importance, with critical warnings taking priority. The following table contains an alphabetical list and does not imply an order of priority

| Message | Meaning | What to do? |
|--|---|---|
| ACCESS MAX 25MPH | Crawl mode is selected. | Do not drive at speeds exceeding 25 mph (40 km/h) whilst in crawl mode or the vehicle will return to standard height. |
| AIR SUSP.INACTIVE + MAX 40 mph (alternating message) | The air suspension system has overheated and has temporarily shut down. | Drive with caution and be aware that the air suspension system will have reduced functionality. If message persists for more than 25 minutes, have the vehicle checked by a retailer as soon as possible. |
| APPLY PARKING BRAKE | The vehicle is in 'P' (Park) and transfer neutral has been selected and the starter switch has been turned off, but the parking brake has not been applied. | Apply the parking brake, or if the vehicle is to be towed on all four wheels, turn the starter switch to position 'I' or 'II'. |
| CHECK BRAKE FLUID | Fluid level is too low. | Stop the vehicle as soon as safety permits and top-up the brake fluid. Have the source of a possible leak checked by your retailer. |
| CHECK BRAKE PADS | The brake pads are reaching their wear limit. | Drive cautiously and consult your retailer at the earliest opportunity. |
| CHECK CONTROL OK | No system faults have been detected by the vehicle diagnostics system. | No action required. |
| CHECK COOLANT LEVEL | Coolant level is too low. | Top-up with the correct mixture of antifreeze and water at the earliest opportunity. If the problem persists, consult your retailer. |
| CHECK DIP BEAM LIGHT | A bulb has failed or there is a fault in the electrical circuit. | Check/replace the bulb or consult your retailer. |
| CHECK ENGINE OIL LEV | The oil level is at the absolute minimum. | Stop the vehicle as soon as safety permits and top-up the engine oil to the correct level. |
| CHECK FRONT FOGLIGHT | A bulb has failed or there is a fault in the electrical circuit. | Check/replace the bulb or consult your retailer. |

Message Centers

| Message | Meaning | What to do? |
|-----------------------|--|--|
| CHECK FRONT LIGHT | More than one front light is defective. | Check which lights are defective, replace any failed bulb. If a light is still defective, have the fault rectified by a retailer. |
| CHECK HIGH BEAM LIGHT | A bulb has failed or there is a fault in the electrical circuit. | Check/replace the bulb or consult your retailer. |
| CHECK NUMPLATE LIGHT | A bulb has failed or there is a fault in the electrical circuit. | Check/replace the bulb or consult your retailer. |
| CHECK REAR FOGLIGHT | A bulb has failed or there is a fault in the electrical circuit. | Check/replace the bulb or consult your retailer. |
| CHECK REAR LIGHT | More than one rear light is defective. | Check which lights are defective and replace any failed bulb. If the light is still defective, have the fault rectified by a retailer. |
| CHECK SIDE LIGHT | A bulb has failed or there is a fault in the electrical circuit. | Check/replace the bulb or consult your retailer. |
| CHECK TAIL LIGHT | A bulb has failed or there is a fault in the electrical circuit. | Check/replace the bulb or consult your retailer. |
| CHECK TRAILER LIGHT | A bulb has failed or there is a fault in the electrical circuit. | Check/replace the bulb or consult your retailer. |
| COOLANT TEMPERATURE | Coolant temperature is too high. | Stop the vehicle as soon as safety permits and switch off the engine and allow to cool down. Consult your retailer at the earliest opportunity. |
| DOOR OPEN | A door is open (displayed as the vehicle moves off from stationary). | Stop the vehicle as soon as safety permits and close the door. |
| DSC INACTIVE | A fault has been detected in the DSC system. | The vehicle is driveable, but proceed with caution. Consult your retailer at the earliest opportunity. |
| EEPROM LCMC | The main lighting switch has a fault. | Consult your retailer at the earliest opportunity. |
| ENGINE FAILSAFE PROG | A fault has been detected in the engine electronics. | The vehicle is driveable, but with reduced engine speed and power. Drive with caution, and consult your retailer at the earliest opportunity. Note that the engine will be more prone to stalling and difficulties starting. |

Message Centers

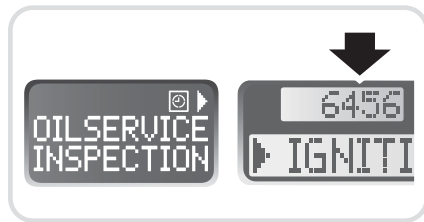
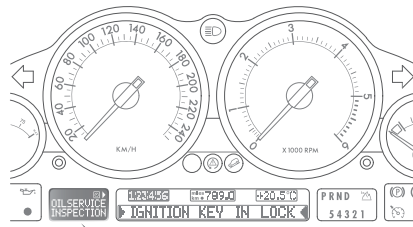
| Message | Meaning | What to do? |
|----------------------|--|--|
| EXTERNAL TEMP X°C/F | The exterior temperature is equal to or less than 37°F (3°C). | This indicates freezing conditions, appropriate defrosting precautions should be taken before driving and ice may be present on the roads. |
| FASTEN SEAT BELTS | The driver's or front passenger's seat belt is not correctly fastened. | Ascertain which seat belt is undone and correctly fasten the belt. |
| FUEL INJECT.SYSTEM | A fault has been detected in the fuel injection system. | Seek qualified assistance. |
| HDC INACTIVE | A fault in the Hill Descent Control system has occurred. | Do not attempt the planned descent/ascent and consult your retailer at the earliest opportunity. |
| HDC TEMP.NOT AVAIL. | The Hill Descent Control system has been over-used and temporarily shut down. | Do not attempt the planned descent/ascent until the system has cooled (the message is no longer displayed). |
| HEADLIGHT DELAY | You have selected headlight delay - headlights will switch off automatically. | No action required. |
| HIGH RANGE | HIGH range has been selected in the transfer gearbox. | Select LOW range if required. |
| KEY BATTERY LOW | The battery in the handset key is low on charge. | Replace the handset key battery. |
| KEY IN IGNITION LOCK | The key has been left in the starter switch and the driver's door has been opened. | Remove the key from the starter switch. |
| LIGHTS ON | The key has been removed from the starter switch and the lights have been left on. | Turn the light switch to the off position, if the lights are no longer required. |
| LOW RANGE | LOW range has been selected in the transfer gearbox. | Select HIGH range if LOW range is not required. |
| LOW SCREENWASH | Fluid level is too low. | Top-up the washer reservoir at the earliest opportunity. |
| MANUAL MODE | The transmission is in manual mode. | Select automatic mode if manual mode is no longer required. |
| NO HDC, SLOW DOWN | The Hill Descent Control operating speed range of 0 - 21 mph (0 - 35 km/h) has been exceeded, or an attempt to select HDC has been made whilst the vehicle is exceeding the operating speed range. | Slow down to below 21 mph (35 km/h) to use or select HDC. |

Message Centers

| Message | Meaning | What to do? |
|-----------------------|---|---|
| OFFROAD MAX 30 MPH | Vehicle speed is exceeding 28 mph (45 km/h), while at off-road height. | Do not drive at speeds exceeding 30 mph (50 km/h) whilst at off-road height. Otherwise the vehicle will return to standard height. |
| PRE-HEATING | The vehicle's preheating system has been activated. | Deactivate the system if not required. |
| RELEASE PARKING BRAKE | The parking brake is applied and a drive gear is selected. | Release the parking brake. |
| SELECT NEUTRAL | You have attempted to change gear ranges without the gearbox being in NEUTRAL. | Select neutral in the main gearbox. |
| SLOW DOWN | Your current road speed is too high to perform a transfer box range change. | Slow the vehicle to the required speed before changing range. |
| SPEED LIMIT* | You are exceeding the set maximum speed limit. | Slow down to conform with the speed limit. |
| SPORT MODE | The transmission is in sport mode. | Select automatic mode if sport mode is no longer required. |
| STOP!ENGINE OILPRESS | Engine oil pressure is too low. | Stop the vehicle as soon as safety permits and switch off the engine. Check the oil level, top-up if necessary - if okay, consult your retailer before driving. |
| TAILGATE OPEN | The tailgate is open as the vehicle moves off from stationary for the first time. | Stop the vehicle as soon as safety permits and close the tailgate. |
| TRAILER MODE | A suspension height change request has been made whilst the vehicle is being used for towing. No change occurs. | Do not attempt to change suspension height when towing - the vehicle must remain at standard height. |
| TRANS FAILSAFE PROG | A malfunction has occurred in the transmission. | Drive carefully avoiding excessive 'revs' and consult your retailer at the earliest opportunity. |
| TRANSFERBOX NEUTRAL | Confirmation that neutral has been selected in the transfer box. | Remove fuse 37 if transfer neutral is no longer required. |
| TRANSMISS'N OVERHEAT | The transmission oil temperature is too high. | If the message persists, stop the vehicle as soon as safety permits and allow the gearbox to cool. Seek qualified assistance if the message resumes. |

Message Centers

SERVICE INTERVAL INDICATOR



H3821

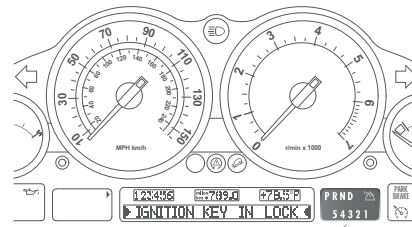
When the starter switch is turned to position 'I', a 'countdown' to when the next service is due appears in the total distance travelled display (arrowed in inset). A minus sign preceding the distance indicates that the service interval point has been exceeded and this is the distance by which it is overdue.

After approximately five seconds, the display reverts to show just the total distance travelled.

The mileage countdown is controlled by the engine management system and is adjusted to allow for driving style and conditions, to gauge when the appropriate service becomes necessary.

NOTE: After the completion of each service, the dealer will reset the distance display to commence the countdown to the next service.

GEAR SELECTOR DISPLAY



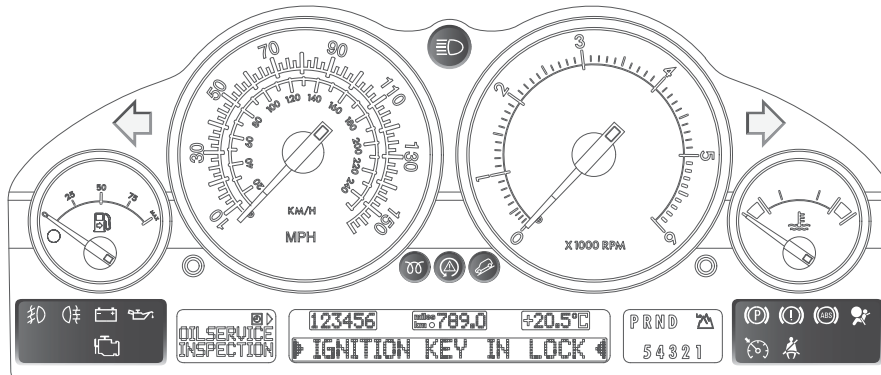
H4346

This shows the current gear lever position ('P', 'R', 'N' or 'D') and indicates when low range has been selected. In addition, the display indicates which gear has been selected when the gearbox is in manual mode ('5', '4', '3', '2' or '1').

The LOW range indicator (in the top right corner of the display) flashes whilst the transfer gearbox changes ranges and then illuminates constantly when low range has engaged. The range change will also be confirmed in the main message center.

Warning Lights

WARNING LIGHTS



H4954

IMPORTANT INFORMATION

RED warning lights are of particular importance, their illumination indicates that a fault exists. If a RED warning light illuminates, stop the vehicle and review the specific instructions given in this section.

Low oil pressure - RED



The light illuminates as a bulb check when the starter switch is turned to position 'II' and extinguishes when the engine is started. If the light remains on, flashes on and off, or illuminates whilst driving, stop the vehicle as soon as safety permits and SWITCH OFF THE ENGINE IMMEDIATELY. Seek qualified assistance before driving. Always check the oil level when this light illuminates.

Rear fog guard light - YELLOW



Illuminates when the rear fog guard lights are switched on.

Front fog lights - GREEN



Illuminates when the front fog lights are switched on.

Battery charging - RED



The light illuminates as a bulb check when the starter switch is turned to position 'II' and extinguishes once the engine is running. If it remains on, or illuminates whilst driving, a fault is indicated. Seek qualified assistance urgently.

Warning Lights

Service engine soon - AMBER



The engine management system on your Range Rover is controlled by a sophisticated engine control module which maintains optimum control of engine running and emission levels and monitors the operation of the sub-systems and components.

The 'Service Engine Soon' indicator illuminates as a system check when the starter switch is turned to position 'II' and should extinguish when the engine is started.

If an engine operation or emissions problem is registered by the engine control module when the vehicle is being operated, the 'Service Engine Soon' indicator will illuminate.

If 'Service Engine Soon' illuminates, and the vehicle drives normally:

Contact your Land Rover retailer to schedule a service appointment at your earliest convenience - YOU MAY STILL DRIVE THE VEHICLE.

If 'Service Engine Soon' flashes, and/or the vehicle does not drive normally:

Avoid high speeds and seek immediate assistance from your Land Rover retailer.

Parking brake system - RED



The light illuminates for about 3 seconds as a bulb check when the starter switch is turned on. It also illuminates when the parking brake is applied with the starter switch in position 'II'.

The light should extinguish when the parking brake is fully released. If the light illuminates whilst driving, a fault with the parking brake system is indicated, seek qualified assistance before continuing.

Brake system - RED



This light shares its position and symbol with the emergency brake assist warning light and illuminates briefly as a bulb check when the starter switch is turned on (the light follows a amber-red-amber sequence).

The light should extinguish shortly after the starter switch is turned to position 'II'. If the light does not extinguish, or illuminates whilst driving, a fault with the brake systems is indicated. Stop the vehicle gently, as soon as safety permits and seek qualified assistance before continuing.

The light may be accompanied by the message 'CHECK BRAKE PADS' or 'CHECK BRAKE FLUID'. If the message 'CHECK BRAKE FLUID' is displayed, check the brake fluid level and top-up if necessary. If the light remains illuminated after the fluid is at the correct level, seek qualified assistance before continuing.

Emergency brake assist - AMBER



This light shares its position and symbol with the brake system warning light and illuminates briefly as a bulb check when the starter switch is turned to position 'II' (the light follows a amber-red-amber sequence).

If the light remains amber after starting, or illuminates whilst driving, a fault with the EBA system is indicated. Drive with care, avoiding heavy brake application, and seek qualified assistance urgently.

Warning Lights

Anti-lock braking system - AMBER



The light illuminates as a bulb check when the starter switch is turned to position 'II'. If the light remains on or illuminates whilst driving, a fault with the ABS system is indicated. Drive with care, avoiding heavy brake application, and seek qualified assistance urgently.

Airbag SRS - RED



The light illuminates when the starter switch is turned to position 'II' and extinguishes after about 4 seconds. If the light illuminates at any other time, the system is faulty - seek qualified assistance urgently.

Cruise control active - GREEN



Illuminates when cruise control is operating.

Seat belt - RED



The light illuminates when the starter switch is turned to position 'II' and extinguishes after approximately 6 seconds, even if the driver's seat belt remains unfastened. Always fasten your seat belt before driving.

Dynamic stability control (DSC) - AMBER



Illuminates briefly as a bulb check when the starter switch is turned to position 'II'. The light also illuminates when the DSC switch is pressed, indicating that DSC has been switched off (but traction control is still active).

The light will flash when the system becomes active and will remain flashing until the system is no longer needed.

If the light illuminates constantly, and does not extinguish when the DSC switch is pressed, a fault has been detected in the system. If there is a fault, DSC will be inactive - drive with care and seek qualified assistance as soon as possible.

Hill descent control (HDC) 'information' - GREEN



Illuminates briefly as a bulb and system check when the starter switch is turned to position 'II' and also illuminates when HDC is selected.

If HDC is selected and the vehicle is within the operating speed range of up to 21 mph (35 km/h), the light will illuminate continuously.

If HDC is selected and the vehicle is driven faster than the operating speed range, the light will flash and the message 'NO HDC - SLOW DOWN' is displayed.

The light will also flash during HDC fade-out (see '*HDC fade-out*', page 161 for further information).

If a fault with the HDC system occurs, HDC will fade-out and then deselect, or immediately deselect (depending on the type of fault and whether or not HDC is in operation). The green light will extinguish and the message 'HDC INACTIVE' will appear in the message center.

Warning Lights

Headlight high beam - BLUE



Illuminates when the headlights are switched to high beam.

Direction indicators - GREEN



The left or right warning light flashes in time with the corresponding left or right direction indicator lights whenever they are operated. If the warning light fails to flash, or flashes very rapidly, this may indicate a bulb failure in one of the direction indicator lights.

If the hazard switch is pressed, both warning lights will flash in conjunction with the direction indicator lights.

Audible Warnings

AUDIBLE WARNINGS

The market specification will determine which of the following audible warnings are necessary to your vehicle.

Lights on reminder

If the lights are left on after the starter switch is turned off, a warning chime will sound when the driver's door is opened. The chime will cease as soon as the lights are switched off or when the driver's door is closed.

Electronic air suspension warnings

Automatic height changes are inhibited while in 'crawl mode' provided that the vehicle does not exceed 25 mph. If vehicle speed exceeds 20 mph, a warning chime will sound.

For further information, please refer to '*Crawl mode*', page 165.

Dynamic stability control (DSC) warning

If a fault with the DSC system is detected, a warning chime will sound once and the DSC warning light will illuminate. The vehicle may still be driven with care, but seek qualified assistance at the earliest opportunity.

Starter key reminder

In some markets, if the key is left in the starter switch while the driver's door is open, a warning will chime continuously. The chime stops as soon as the door is closed or the key is removed from the starter switch.

Seat belt reminder

If the driver's seat belt has not been fastened when the starter switch is turned on, a warning chime will sound (one second frequency). The chime operates in conjunction with the seat belt warning light and sounds for 6 seconds, or until the seat belt is fastened (whichever occurs first).

External temperature warning

If the external temperature drops to 37°F (3°C) or less, a warning chime sounds, accompanied by a warning in the message center. Take appropriate measures to defrost the vehicle and be aware that there may be ice on the roads.