



**Cable - selector - differential lock - adjust**

↔ 41.20.11

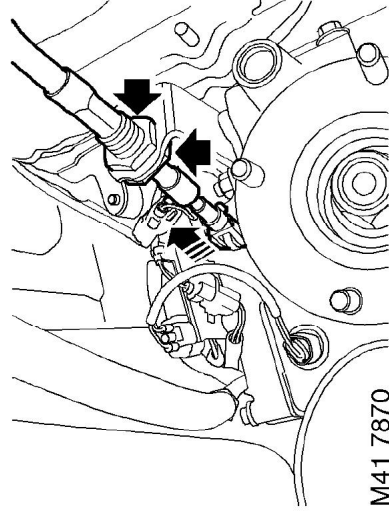
**Check**

1. Check operation of differential lock selection and adjust cable if required.

**Adjust**

1. Remove front propeller shaft.

**PROPELLER SHAFTS, REPAIRS, Propeller shaft - front.**



M41 7870

2. Loosen locknuts securing outer cable to abutment bracket.
3. Move differential lock selector lever to non differential lock position.
4. Move differential lever on transfer gearbox fully forward to rotate selector shaft anti-clockwise into the non differential lock detent position.

**CAUTION: Should the lever move past the detent, allow it to move back into the non differential lock detent position before adjusting the cable.**

5. Without moving levers, simultaneously tighten differential lock outer cable locknuts either side of the abutment bracket to 30 Nm (22 lbf.ft).
6. Fit front propeller shaft.

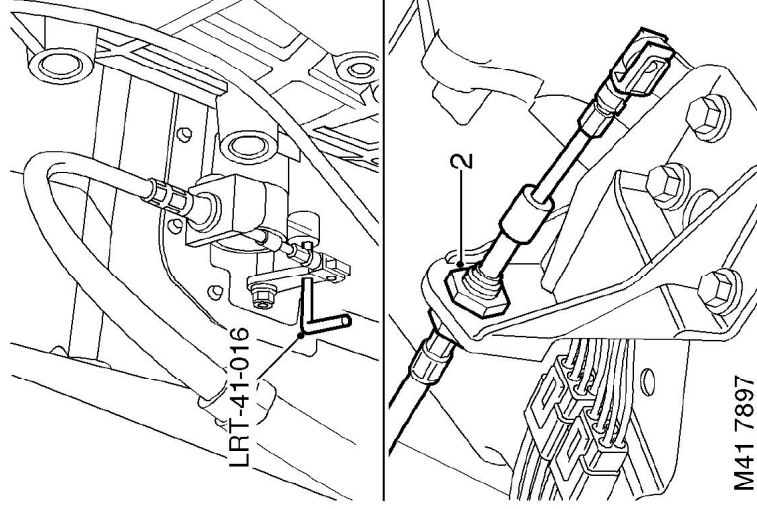
**PROPELLER SHAFTS, REPAIRS, Propeller shaft - front.**

**Cable - high/low selector**

↔ 41.20.46

**Adjust**

1. Raise vehicle on ramp.



M41 7897

2. Using a suitable crows foot spanner, loosen lock nuts securing outer cable to abutment bracket.
3. Select high range by moving lever on transfer gearbox fully forward.
4. Insert tool **LRT-41-016** through hole in selector lever and housing. **This ensures selector lever is in the high range position.**
5. Check that tool **LRT-41-016** is a sliding fit in selector lever and housing.
6. Simultaneously tighten high/low selector cable lock nuts either side of abutment bracket to 30 Nm (22 lbf.ft).
7. Remove tool **LRT-41-016** from gear selector lever and housing.
8. Lower vehicle on ramp.