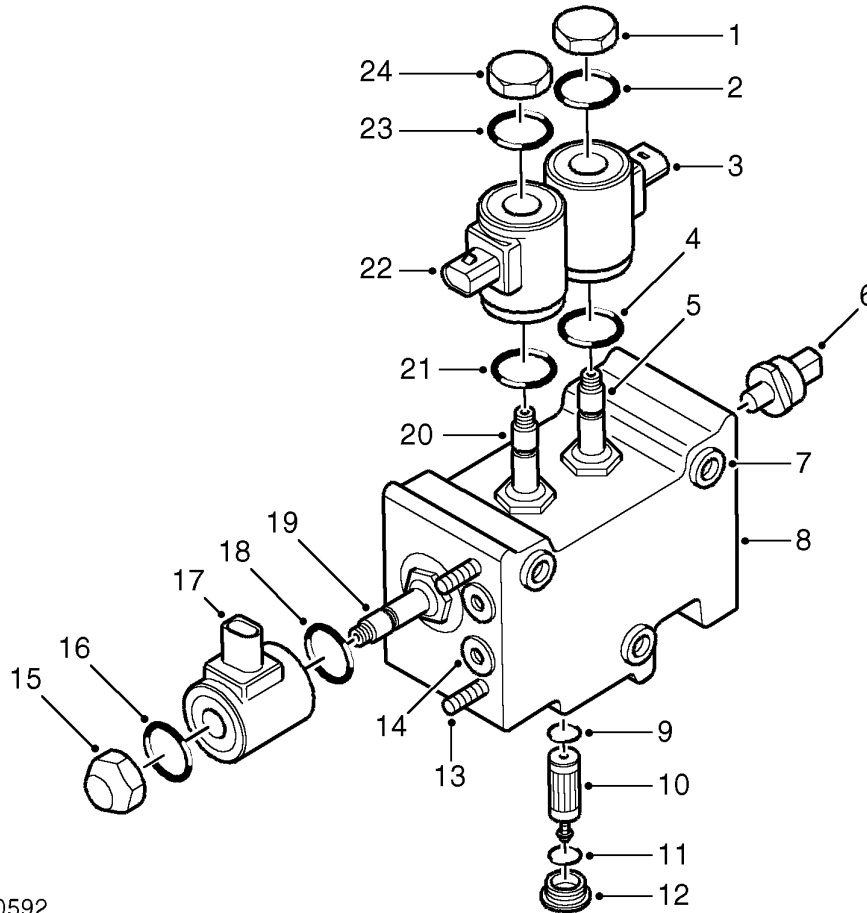


# FRONT SUSPENSION

## Valve block



M60 0592

- |  |  |
|--|--|
| 1 Cap                                  | 13 Stud 4 off                            |
| 2 'O' ring                             | 14 Pipe connections                      |
| 3 Coil                                 | 15 Cap                                   |
| 4 'O' ring                             | 16 'O' ring                              |
| 5 Directional control valve 1 (extend) | 17 Coil                                  |
| 6 Pressure transducer                  | 18 'O' ring                              |
| 7 Mounting bush 3 off                  | 19 Pressure control valve                |
| 8 Valve block                          | 20 Directional control valve 2 (retract) |
| 9 'O' ring                             | 21 'O' ring                              |
| 10 High pressure filter                | 22 Coil                                  |
| 11 'O' ring                            | 23 'O' ring                              |
| 12 Cap                                 | 24 Cap                                   |

The valve block directs hydraulic pressure to the actuators via solenoid operated directional control valves. A solenoid operated pressure control valve regulates the required pressure to the actuators. The three valve solenoids are controlled by signals received from the ACE ECU. A pressure transducer monitors the pressure delivered by the pump. A replaceable high pressure filter is installed into the lower face of the valve block and filters fluid before it reaches the valves.

The valve block is located on the outside of the right hand chassis longitudinal. The valve block is secured to the chassis with three bolts and rubber bushes. The rubber bushes isolate the valve block from the chassis, preventing hydraulic noise from the valve block transmitting through the chassis and body.