

What is Lynx?

Finding and rectifying common Land Rover electrical faults has never been easier. Britpart have worked closely with Omitec to design and build a highly advanced Land Rover diagnostic tool. As well as the multi-model professional version, a single Land Rover model home use version is available too.

The Lynx interface is Windows* based and when running diagnostics on a Windows laptop or Windows tablet, far more information can be displayed to the user than on a hand held device. Being Windows based there is familiarity and flexibility with the interface and navigation is much more intuitive.

What does Lynx do?

- Read fault codes
- Clear fault codes
- Read live data
- Record & play back live data
- Test actuators
- Special functions - see coverage chart
- Programming - such as alarm settings, key fobs etc.
- Service reset

What do you get with Lynx?

- Windows compatible software
- Vehicle Communication Interface box (VCI)
- USB to VCI lead
- VCI to OBD II lead
- Quick start booklet
- Activation form
- Unlock code booklet
- Carry case with foam insert

More about Lynx

As Lynx is Windows based, the system is future proofed due to your laptop or tablet's hard disk drive which allows for 'many more' numbers of updates compared to hand held devices. Lynx is powered by Omitec who build the T4 – Official Land Rover diagnostics tool. Live data can also be displayed using graphics; making it easier to read time based events. Live data can be recorded for a comparison, a great advantage over hand held diagnostic tools as they do not usually have storage memory. The Windows based tool allows simultaneous access to the vehicle diagnostics and consultation of circuit diagrams and other technical information. Lynx will also allow you to access the internet if you are connected to it whilst diagnosing a vehicle and other such programs you might need to use in a garage environment. Lynx is supplied in a hard wearing carry case with foam insert to protect it when not in use. For the enthusiast home user, using Lynx will mean no more trips to your local main dealer to clear any faults on your Land Rover.

What do I need?

Multi-model professional version

Unlocked for all Land Rover models in Lynx range. See overleaf for full Lynx model coverage.

DA6431	English	DA6431ESP	Spanish
DA6431GER	German	DA6431FRA	French

Single model home user version

Unlocked for one Land Rover model only.

Upgradable for extra Land Rover models at a later date.

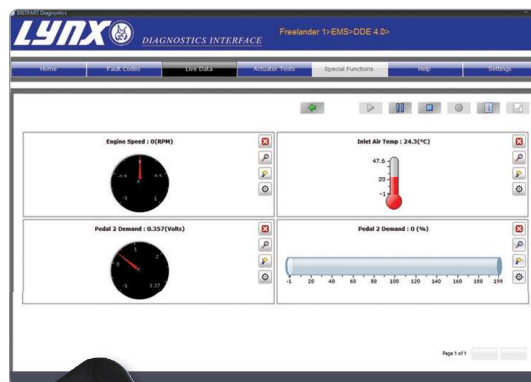
DA6430	English	DA6430ESP	Spanish
DA6430GER	German	DA6430FRA	French
DA6434	Home user additional Land Rover model unlock code		

Extras

DA6432	14CUX lead - for use with hot wire V8 Efi vehicles
DA6433	Upgrade lead - power cable for use with firmware updates
DA6433EU	Upgrade lead - European 2-pin power cable for use with firmware updates



Developed in conjunction with Omitec



View live data with intuitive interface



Unlock codes available for home users

See Lynx in action and a FAQ section at -

www.lynx-diagnostics.com

*Microsoft Windows based PC or tablet with - Microsoft Windows XP, Windows Vista, Windows 7 or Windows 8 operating system. DVD drive. 500MB available hard disk space (minimum). 1024 x 768 screen resolution (minimum). Administrative rights - only required for software installation.

Lynx Vehicle Coverage

Key
● Existing feature
● Enhanced feature
● New feature

Vehicle Model	Years	System	System Name	Read Fault Codes	Clear Fault Codes	Live Data	ECM Data	Actuators	Programming	Maintenance
Defender	1999 - 2007	Diesel EMS	TD5	●	●	●		●	●	
Defender	1994 - 2007	Petrol EMS	14CUX	●	●	●		●		
Defender	1994 - 1995	Petrol EMS	GEMS	●	●	●		●	●	●
Defender	1999 - 2007	ABS	WABCO D ABS	●	●	●	●	●	●	●
Defender	1996 - 2007	Security	10AS			●			●	
Defender	2007 - 2010	Drive - Diesel EMS	Diesel Engine Management System	●	●	●	●			●
Defender	2007 - 2010	Chassis - ABS	WABCO D ABS	●	●	●	●	●	●	●
Defender	2007 - 2010	Body - Instruments	IPC - Instrument Panel Control Module	●	●	●	●			
Defender	2007 - 2010	Body - Security	10AS			●			●	
Defender	2011	Drive - Diesel EMS	Diesel Engine Management System	●	●	●	●			●
Defender	2011	Chassis - ABS	ABS	●	●	●	●			
Defender	2011	Body - Instruments	IPC - Instrument Panel Control Module	●	●	●	●			
Defender	2011	Body - Security	10AS			●			●	
Defender	2012 -	Drive - Diesel EMS	PCM - Powertrain Control Module (Diesel)	●	●	●	●			●
Defender	2012 -	Chassis - ABS	ABS	●	●	●	●			
Defender	2012 -	Body - Instruments	IPC - Instrument Panel Control Module	●	●	●	●			
Defender	2012 -	Body - Security	10AS			●				●
Freelander 1	1998 - 2001	EMS - Diesel EMS	Bosch EDC 1.3.1	●	●	●	●	●		
Freelander 1	2001 - 2006	EMS - Diesel EMS	Bosch DDE4	●	●	●	●	●		
Freelander 1	1998 - 2001	EMS - Petrol EMS	MEMS 1.9	●	●	●	●	●		
Freelander 1	2001 - 2006	EMS - Petrol EMS	MEMS 3	●	●	●	●	●		
Freelander 1	2001 - 2006	EMS - Petrol EMS	Siemens EMS2000	●	●	●	●	●		
Freelander 1	2001 - 2006	EMS - Petrol EMS	Siemens MS43	●	●	●	●	●		
Freelander 1	1998 - 2006	Transmission	Jatco	●	●	●	●			
Freelander 1	1998 - 2001	ABS	WABCO D ABS	●	●	●	●	●	●	●
Freelander 1	2000 - 2001	ABS	TEVES MK20	●	●	●				
Freelander 1	2002 - 2006	ABS	TEVES MK25	●	●	●				
Freelander 1	1998 - 2002	Airbag	Autoliv ACU 4	●	●		●			
Freelander 1	2003 - 2006	Airbag	Siemens SRE Smart	●	●		●			
Freelander 1	1998 - 2001	Security	27VT - CCU			●		●	●	
Freelander 1	2000 - 2002	Security	EWS 3D	●	●	●		●	●	
Freelander 1	2000 - 2002	FFH	Fuel Fired Heater	●	●	●		●		●
Freelander 2	2007 - 2010	Drive - Diesel EMS	PCM - Power Train Control Module (Diesel)	●	●	●	●			●
Freelander 2	2007 - 2010	Drive - Petrol EMS	PCM - Power Train Control Module (Petrol)	●	●	●	●			
Freelander 2	2007 - 2010	Drive - Transmission	TCM - Transmission Control Module	●	●	●	●			●
Freelander 2	2007 - 2010	Drive - Transmission	RDCM - Rear Differential Control Module	●	●	●	●			
Freelander 2	2007 - 2010	Chassis - ABS/DSC	ABS / DSC - Antilocking brake System / Dynamic Stability Control	●	●	●	●			●
Freelander 2	2007 - 2010	Chassis - Steering Angle	SASM - Steering Angle Sensor Module	●	●	●	●			●
Freelander 2	2007 - 2010	Chassis - ATCM	ATCM - All Terrain Control Module	●	●	●	●			
Freelander 2	2007 - 2010	Body - Airbag	RCM - Restraints Control Module	●	●	●	●			●
Freelander 2	2007 - 2010	Body - Airbag	OCS - Occupancy Classification System	●	●	●	●			
Freelander 2	2007 - 2010	Body - Climate Control	HVAC - Heating, Ventilation and Air Conditioning	●	●	●	●			●
Freelander 2	2007 - 2010	Body - Body Controller	BCM - Body Control Module	●	●	●	●			●
Freelander 2	2007 - 2010	Body - Instruments	IPC - Instrument Panel Control Module	●	●	●	●			●
Freelander 2	2007 - 2010	Body - Lighting Control	HCM - Headlamp Control Module	●	●	●	●			
Freelander 2	2007 - 2010	Body - Parking Aid	PAM - Parking Aid Module	●	●	●	●			
Freelander 2	2007 - 2010	Body - Fuel Fired Heater	FFH - Fuel Fired Heater	●	●	●	●			
Freelander 2	2007 - 2010	Body - Seating	DSM - Drivers Seat Module	●	●	●	●			
Freelander 2	2007 - 2010	Body - Doors	DDM - Drivers Door Module	●	●	●	●			
Freelander 2	2007 - 2010	Body - Doors	PDM - Passengers Door Module	●	●	●	●			
Freelander 2	2007 - 2010	Body - Trailer Module	TRM - Trailer Module	●	●	●	●			
Freelander 2	2007 - 2010	Infotainment - ICM	ICM - Infotainment Control Module	●	●	●	●			
Freelander 2	2007 - 2010	Service Function - Service Reset	IPC - Instrument Panel Control Module							●
Freelander 2	2007 - 2010	Global Function - Clear DTCs	High Speed CAN Clear DTCs		●					
Freelander 2	2007 - 2010	Global Function - Clear DTCs	Medium Speed CAN Clear DTCs		●					
Freelander 2	2007 - 2010	Global Functions - ECU Reset	High Speed CAN ECU Reset							●
Freelander 2	2007 - 2010	Global Functions - ECU Reset	Medium Speed CAN ECU Reset							●
Freelander 2	2011 -	Drive - Diesel EMS	PCM - Power Train Control Module (Diesel)	●	●	●	●			●
Freelander 2	2011 -	Drive - Petrol EMS	PCM - Power Train Control Module (Petrol)	●	●	●	●			
Freelander 2	2011 -	Drive - Transmission	TCM - Transmission Control Module	●	●	●	●			●
Freelander 2	2011 -	Drive - Transmission	RDCM - Rear Differential Control Module	●	●	●	●			
Freelander 2	2011 -	Chassis - ABS/DSC	ABS / DSC - Antilocking brake System / Dynamic Stability Control	●	●	●	●			●
Freelander 2	2011 -	Chassis - Steering Angle	SASM - Steering Angle Sensor Module	●	●	●	●			●
Freelander 2	2011 -	Chassis - ATCM	ATCM - All Terrain Control Module	●	●	●	●			
Freelander 2	2011 -	Body - Airbag	RCM - Restraints Control Module	●	●	●	●			●
Freelander 2	2011 -	Body - Airbag	OCS - Occupancy Classification System	●	●	●	●			
Freelander 2	2011 -	Body - Climate Control	HVAC - Heating, Ventilation and Air Conditioning	●	●	●	●			●
Freelander 2	2011 -	Body - Body Controller	BCM - Body Control Module	●	●	●	●			●
Freelander 2	2011 -	Body - Instruments	IPC - Instrument Panel Control Module	●	●	●	●			●
Freelander 2	2011 -	Body - Lighting Control	HCM - Headlamp Control Module	●	●	●	●			
Freelander 2	2011 -	Body - Parking Aid	PAM - Parking Aid Module	●	●	●	●			
Freelander 2	2011 -	Body - Fuel Fired Heater	FFH - Fuel Fired Heater	●	●	●	●			
Freelander 2	2011 -	Body - Seating	DSM - Drivers Seat Module	●	●	●	●			
Freelander 2	2011 -	Body - Doors	DDM - Drivers Door Module	●	●	●	●			
Freelander 2	2011 -	Body - Doors	PDM - Passengers Door Module	●	●	●	●			
Freelander 2	2011 -	Body - Trailer Module	TRM - Trailer Module	●	●	●	●			
Freelander 2	2011 -	Infotainment - ICM	ICM - Infotainment Control Module	●	●	●	●			
Freelander 2	2011 -	Service Function - Service Reset	Service Reset							●
Freelander 2	2011 -	Global Function - Clear DTCs	High Speed CAN Clear DTCs		●					

Lynx Vehicle Coverage - continued

Key
● Existing feature
● Enhanced feature
● New feature

Vehicle Model	Years	System	System Name	Read Fault Codes	Clear Fault Codes	Live Data	ECM Data	Actuators	Programming	Maintenance
Freelander 2	2011 -	Global Function - Clear DTCs	Medium Speed CAN Clear DTCs		●					
Freelander 2	2011 -	Global Functions - ECU Reset	High Speed CAN ECU Reset							●
Freelander 2	2011 -	Global Functions - ECU Reset	Medium Speed CAN ECU Reset							●
Discovery 1	1996 - 1998	EMS - Diesel EMS	Bosch EDC 1.3.1	●	●	●	●	●		
Discovery 1	1995 - 1998	EMS - Petrol EMS	14CUX	●	●	●	●	●		
Discovery 1	1996 - 1998	EMS - Petrol EMS	GEMS	●	●	●	●	●	●	●
Discovery 1	1993 - 1998	EMS - Petrol EMS	MEMS 1.9	●	●	●	●	●		
Discovery 1	1995 - 1996	ABS	WABCO C ABS	●	●	●	●	●		
Discovery 1	1995 - 1996	Airbag	TRW MPS	●	●					
Discovery 1	1996 - 1998	Airbag	TRW SPS	●	●		●			
Discovery 1	1996 - 1998	Security	10AS			●			●	
Discovery 2	1998 - 2005	Diesel EMS	TD5	●	●	●	●	●	●	
Discovery 2	1998 - 2005	Petrol EMS	Bosch M5.2.1	●	●	●	●	●		●
Discovery 2	1998 - 2005	Transmission	GS 8.87.X	●	●	●	●		●	●
Discovery 2	1998 - 2005	ABS	WABCO D ABS/SLABS	●	●	●	●	●	●	●
Discovery 2	1998 - 2005	Airbag	TRW Generation 4	●	●		●			
Discovery 2	1998 - 2005	Security	Valeo BCU			●		●	●	
Discovery 2	1998 - 2005	Chassis	ACE - Suspension (ROCK/ARC)	●	●	●	●	●	●	
Discovery 2	1998 - 2005	Chassis	WABCO D ABS/SLABS - Suspension	●	●	●	●	●	●	●
Discovery 3	2005 - 2009	Drive - Diesel EMS	PCM - Power Train Control Module (Diesel)	●	●	●	●	●		●
Discovery 3	2005 - 2009	Drive - Petrol EMS	PCM - Power Train Control Module (Petrol)	●	●	●	●	●		●
Discovery 3	2005 - 2009	Drive - Transmission	TCM - Transmission Control Module	●	●	●	●			●
Discovery 3	2005 - 2009	Drive - Transmission	RDCM - Rear Differential Control Module	●	●		●			
Discovery 3	2005 - 2009	Drive - Transfer Case	TCCM - Transfer Case Control Module	●	●		●			
Discovery 3	2005 - 2009	Drive - Adaptive Cruise Control	CCM - Cruise Control Module	●	●		●			
Discovery 3	2005 - 2009	Chassis - ABS / DSC	ABS / DSC - Antilocking brake System / Dynamic Stability Control	●	●	●	●			●
Discovery 3	2005 - 2009	Chassis - Steering Angle	SASM - Steering Angle Sensor Module	●	●		●			●
Discovery 3	2005 - 2009	Chassis - Park Brake	PBM - Park Brake Module			●				●
Discovery 3	2005 - 2009	Chassis - TPMS	TPMS - Tyre Pressure Monitoring System	●	●	●	●			
Discovery 3	2005 - 2009	Chassis - ATCM	ATCM - All Terrain Control Module	●	●		●			
Discovery 3	2005 - 2009	Chassis - Suspension	RLM - Ride Level Control Module	●	●	●	●			●
Discovery 3	2005 - 2009	Body - Airbag	RCM - Restraints Control Module	●	●	●	●			
Discovery 3	2005 - 2009	Body - Climate Control	HVAC - Heating Ventilation Air Conditioning Control Module	●	●		●			
Discovery 3	2005 - 2009	Body - Body Control	BCM - Body Control Module	●	●	●	●			
Discovery 3	2005 - 2009	Body - Instruments	IPC - Instrument Panel Control Module	●	●		●			●
Discovery 3	2005 - 2009	Body - Lighting Control	FLM - Front Lighting Module	●	●		●			
Discovery 3	2005 - 2009	Body - Parking Aid	PAM - Parking Aid Module	●	●	●	●			
Discovery 3	2005 - 2009	Body - Fuel Fired Heater	FFH - Fuel Fired Heater	●	●	●	●			
Discovery 3	2005 - 2009	Infotainment - Audio and Visual	AAM - Audio Amplifier Module	●	●		●			
Discovery 3	2005 - 2009	Infotainment - Audio and Visual	ACM - Audio Control Module	●	●		●			
Discovery 3	2005 - 2009	Infotainment - Audio and Visual	FEM - Front Electronic Module	●	●		●			
Discovery 3	2005 - 2009	Infotainment - Audio and Visual	DACMC - Digital Audio Control Module 'C'	●	●		●			
Discovery 3	2005 - 2009	Infotainment - Audio and Visual	SRM - Satellite Audio Unit Module	●	●		●			
Discovery 3	2005 - 2009	Infotainment - Audio and Visual	TVM - Television Module	●	●		●			
Discovery 3	2005 - 2009	Infotainment - REM	REM - Rear Entertainment Control Module	●	●		●			
Discovery 3	2005 - 2009	Infotainment - TEL	TEL - Cellular Telephone Control Module	●	●		●			
Discovery 3	2005 - 2009	Infotainment - TMC	TMC - Traffic Message Channel Module	●	●		●			
Discovery 3	2005 - 2009	Service Functions - Service Reset	IPC - Instrument Panel Control Module							●
Discovery 3	2005 - 2009	Global Function - Clear DTCs	High Speed CAN Clear DTCs		●					
Discovery 3	2005 - 2009	Global Function - Clear DTCs	Medium Speed CAN Clear DTCs		●					
Discovery 3	2005 - 2009	Global Functions - ECU Reset	High Speed CAN ECU Reset							●
Discovery 3	2005 - 2009	Global Functions - ECU Reset	Medium Speed CAN ECU Reset							●
Discovery 4	2010 - 2011	Drive - Diesel EMS	PCM - Power Train Control Module (Diesel V6 2.7)	●	●	●	●			●
Discovery 4	2010 - 2011	Drive - Diesel EMS	PCM - Power Train Control Module (Diesel V6 3.0)	●	●	●	●			●
Discovery 4	2010 - 2011	Drive - Petrol EMS	PCM - Power Train Control Module (Petrol V6)	●	●	●	●			
Discovery 4	2010 - 2011	Drive - Petrol EMS	PCM - Power Train Control Module (Petrol V8)	●	●	●	●			
Discovery 4	2010 - 2011	Drive - Transmission	TCM - Transmission Control Module (Diesel V6 2.7)	●	●	●	●			
Discovery 4	2010 - 2011	Drive - Transmission	TCM - Transmission Control Module (Diesel V6 3.0)	●	●	●	●			
Discovery 4	2010 - 2011	Drive - Transmission	TCM - Transmission Control Module (Petrol V6)	●	●	●	●			
Discovery 4	2010 - 2011	Drive - Transmission	TCM - Transmission Control Module (Petrol V8)	●	●	●	●			
Discovery 4	2010 - 2011	Drive - Transmission	RDCM - Rear Differential Control Module	●	●		●			
Discovery 4	2010 - 2011	Drive - Transfer Case	TCCM - Transfer Case Control Module	●	●		●			
Discovery 4	2010 - 2011	Drive - Adaptive Cruise Control	CCM - Cruise Control Module	●	●		●			
Discovery 4	2010 - 2011	Chassis - ABS / DSC	ABS / DSC - Antilocking brake System / Dynamic Stability Control	●	●	●	●			●
Discovery 4	2010 - 2011	Chassis - Steering Angle	SASM - Steering Angle Sensor Module	●	●		●			●
Discovery 4	2010 - 2011	Chassis - Park Brake	PBM - Park Brake Module			●				●
Discovery 4	2010 - 2011	Chassis - ATCM	ATCM - All Terrain Control Module	●	●		●			
Discovery 4	2010 - 2011	Chassis - Suspension	RLM - Ride Level Control Module	●	●	●	●			●
Discovery 4	2010 - 2011	Body - Airbag	RCM - Restraints Control Module	●	●	●	●			
Discovery 4	2010 - 2011	Body - Airbag	OCS - Occupancy Classification System	●	●	●	●			
Discovery 4	2010 - 2011	Body - Climate Control	HVAC - Heating Ventilation Air Conditioning Control Module	●	●		●			
Discovery 4	2010 - 2011	Body - Body Controller	BCM - Body Control Module	●	●	●	●			●
Discovery 4	2010 - 2011	Body - Instruments	IPC - Instrument Panel Control Module	●	●		●			●
Discovery 4	2010 - 2011	Body - Lighting Control	HCM - Headlamp Control Module	●	●		●			
Discovery 4	2010 - 2011	Body - Lighting Control	HCMB - Headlamp Control Module 'B'	●	●		●			
Discovery 4	2010 - 2011	Body - Parking Aid	PAM - Parking Aid Module	●	●	●	●			
Discovery 4	2010 - 2011	Body - Immobiliser	Immobiliser	●	●		●			
Discovery 4	2010 - 2011	Body - Fuel Fired Heater	FFH - Fuel Fired Heater	●	●	●	●			
Discovery 4	2010 - 2011	Body - Seating	DSM - Drivers Seat Module	●	●		●			
Discovery 4	2010 - 2011	Body - Doors	DDM - Drivers Door Module	●	●		●			

Lynx Vehicle Coverage - continued

Key
● Existing feature
● Enhanced feature
● New feature

Vehicle Model	Years	System	System Name	Read Fault Codes	Clear Fault Codes	Live Data	ECM Data	Actuators	Programming	Maintenance
Discovery 4	2010 - 2011	Body - Doors	PDM - Passengers Door Module	●	●		●			
Discovery 4	2010 - 2011	Body - KVM	KVM - Keyless Vehicle Module	●	●		●			
Discovery 4	2010 - 2011	Infotainment - Audio and Visual	AAM - Audio Amplifier Module	●	●		●			
Discovery 4	2010 - 2011	Infotainment - Audio and Visual	ACM - Audio Control Module	●	●		●			
Discovery 4	2010 - 2011	Infotainment - Audio and Visual	FEM - Front Electronic Module	●	●		●			
Discovery 4	2010 - 2011	Infotainment - Audio and Visual	FCDIM - Front Control / Display Interface Module	●	●		●			
Discovery 4	2010 - 2011	Infotainment - Audio and Visual	FCIM - Front Control Interface Module	●	●		●			
Discovery 4	2010 - 2011	Infotainment - Audio and Visual	FCIMB - Front Control Interface Module 'B'	●	●		●			
Discovery 4	2010 - 2011	Infotainment - Audio and Visual	DABM - Digital Audio Broadcast Module	●	●		●			
Discovery 4	2010 - 2011	Infotainment - Audio and Visual	DACMC - Digital Audio Control Module 'C'	●	●		●			
Discovery 4	2010 - 2011	Infotainment - Audio and Visual	SRM - Satellite Audio Unit Module	●	●		●			
Discovery 4	2010 - 2011	Infotainment - Audio and Visual	TVM - Television Module	●	●		●			
Discovery 4	2010 - 2011	Infotainment - APIM	APIM - Accessory Protocol Interface Module	●	●		●			
Discovery 4	2010 - 2011	Infotainment - REM	REM - Rear Entertainment Control Module	●	●		●			
Discovery 4	2010 - 2011	Infotainment - TEL	TEL - Cellular Telephone Control Module	●	●		●			
Discovery 4	2010 - 2011	Infotainment - SPRM	SPRM - Speech Recognition Control Module	●	●		●			
Discovery 4	2010 - 2011	Infotainment - IPMB	IPMB - Image Processing Module 'B'	●	●		●			
Discovery 4	2010 - 2011	Service Functions - Service Reset	IPC - Instrument Panel Control Module							●
Discovery 4	2010 - 2011	Global Function - Clear DTCs	High Speed CAN Clear DTCs							
Discovery 4	2010 - 2011	Global Function - Clear DTCs	Medium Speed CAN Clear DTCs		●					
Discovery 4	2010 - 2011	Global Functions - ECU Reset	High Speed CAN ECU Reset							●
Discovery 4	2010 - 2011	Global Functions - ECU Reset	Medium Speed CAN ECU Reset							●
Discovery 4	2012 -	Drive - Diesel EMS	PCM - Power Train Control Module (Diesel V6 2.7)	●	●	●	●			●
Discovery 4	2012 -	Drive - Diesel EMS	PCM - Power Train Control Module (Diesel V6 3.0)	●	●	●	●			●
Discovery 4	2012 -	Drive - Petrol EMS	PCM - Power Train Control Module (Petrol)	●	●	●	●			
Discovery 4	2012 -	Drive - Transmission	TCM - Transmission Control Module (Diesel V6 2.7)	●	●	●	●			
Discovery 4	2012 -	Drive - Transmission	TCM - Transmission Control Module (Diesel V6 3.0)	●	●	●	●			
Discovery 4	2012 -	Drive - Transmission	TCM - Transmission Control Module (Petrol)	●	●	●	●			
Discovery 4	2012 -	Drive - Transmission	GSM - Gear Shift Module	●	●		●			
Discovery 4	2012 -	Drive - Transmission	RDCM - Rear Differential Control Module	●	●		●			
Discovery 4	2012 -	Drive - Transfer Case	TCCM - Transfer Case Control Module	●	●		●			
Discovery 4	2012 -	Chassis - ABS / DSC	ABS / DSC - Antilocking brake System / Dynamic Stability Control	●	●	●	●			●
Discovery 4	2012 -	Chassis - Steering Angle	SASM - Steering Angle Sensor Module	●	●		●			●
Discovery 4	2012 -	Chassis - Park Brake	PBM - Park Brake Module	●	●	●	●			●
Discovery 4	2012 -	Chassis - ATCM	ATCM - All Terrain Control Module	●	●		●			
Discovery 4	2012 -	Chassis - Suspension	RLM - Ride Level Control Module	●	●	●	●			●
Discovery 4	2012 -	Body - Airbag	RCM - Restraints Control Module	●	●	●	●			●
Discovery 4	2012 -	Body - Airbag	OCS - Occupancy Classification System	●	●	●	●			
Discovery 4	2012 -	Body - Climate Control	HVAC - Heating Ventilation Air Conditioning Control Module	●	●		●			
Discovery 4	2012 -	Body - Body Controller	BCM - Body Control Module	●	●	●	●			●
Discovery 4	2012 -	Body - Instruments	IPC - Instrument Panel Control Module	●	●		●			●
Discovery 4	2012 -	Body - Lighting Control	HCM - Headlamp Control Module	●	●		●			
Discovery 4	2012 -	Body - Lighting Control	HCMB - Headlamp Control Module 'B'	●	●		●			
Discovery 4	2012 -	Body - Parking Aid	PAM - Parking Aid Module	●	●	●	●			
Discovery 4	2012 -	Body - Immobiliser	Immobiliser	●	●		●			
Discovery 4	2012 -	Body - Fuel Fired Heater	FFH - Fuel Fired Heater	●	●	●	●			
Discovery 4	2012 -	Body - Doors	DDM - Drivers Door Module	●	●		●			
Discovery 4	2012 -	Body - Doors	PDM - Passengers Door Module	●	●		●			
Discovery 4	2012 -	Body - KVM	KVM - Keyless Vehicle Module	●	●		●			
Discovery 4	2012 -	Infotainment - Audio and Visual	FCDIM - Front Control / Display Interface Module	●	●		●			
Discovery 4	2012 -	Infotainment - Audio and Visual	FCIM - Front Control Interface Module	●	●		●			
Discovery 4	2012 -	Infotainment - Audio and Visual	FCIMB - Front Control Interface Module 'B'	●	●		●			
Discovery 4	2012 -	Infotainment - IPMB	IPMB - Image Processing Module 'B'	●	●		●			
Discovery 4	2012 -	Service Functions - Service Reset	IPC - Instrument Panel Control Module							●
Discovery 4	2012 -	Global Function - Clear DTCs	High Speed CAN Clear DTCs		●					
Discovery 4	2012 -	Global Function - Clear DTCs	Medium Speed CAN Clear DTCs		●					
Discovery 4	2012 -	Global Functions - ECU Reset	High Speed CAN ECU Reset							●
Discovery 4	2012 -	Global Functions - ECU Reset	Medium Speed CAN ECU Reset							●
Range Rover Classic	1990 - 1995	Petrol EMS	14CUX	●	●	●		●		
Range Rover P38	1995 - 2002	Diesel EMS	Bosch EDC 1.3.1	●	●	●	●			
Range Rover P38	1999 - 2002	Petrol EMS	Bosch M5.2.1	●	●	●	●			●
Range Rover P38	1995 - 1999	Petrol EMS	GEMS	●	●	●	●	●	●	●
Range Rover P38	1998 - 2002	Transmission	GS 2.38	●	●	●	●			
Range Rover P38	1998 - 2002	Transmission	GS 8.87.X	●	●	●	●		●	●
Range Rover P38	1995 - 1999	ABS	WABCO C ABS	●	●	●	●	●		
Range Rover P38	1999 - 2002	ABS	WABCO D ABS	●	●	●	●	●	●	
Range Rover P38	1999 - 2002	Airbag	TRW MPS	●	●		●			
Range Rover P38	1998 - 2002	Airbag	TRW SP5	●	●		●			
Range Rover P38	1998 - 2002	Airbag	TRW Gen 4	●	●		●			
Range Rover P38	1998 - 2002	Climate Control	HVAC - Heating Ventilation Air Conditioning Control Module	●	●		●			
Range Rover P38	1995 - 2002	Chassis	Air Suspension	●	●	●	●	●		●
Range Rover P38	1995 - 2002	Body Electrics	BeCM	●	●	●	●	●	●	●



Your complete Land Rover diagnostics tool!

Lynx Vehicle Coverage - continued

Key
● Existing feature
● Enhanced feature
● New feature

Vehicle Model	Years	System	System Name	Read Fault Codes	Clear Fault Codes	Live Data	ECM Data	Actuators	Programming	Maintenance
Range Rover L322	2002 - 2005	Drive - Diesel EMS	Bosch DDE4	●	●	●	●	●		
Range Rover L322	2002 - 2005	Drive - Petrol EMS	Bosch ME7.2	●	●	●	●	●		
Range Rover L322	2002 - 2005	Drive - Transmission	GM5 / EGS 20	●	●	●	●	●		
Range Rover L322	2002 - 2005	Drive - Transmission	ZF / EGS 8602	●	●	●	●	●		
Range Rover L322	2002 - 2005	Chassis - ABS / DSC	Bosch 5.7	●	●					●
Range Rover L322	2002 - 2005	Chassis - Steering Angle	Steering Angle	●	●					●
Range Rover L322	2002 - 2005	Chassis - Air Suspension	EHC2	●	●	●	●	●		●
Range Rover L322	2002 - 2005	Body - Airbag	MRS 4	●	●		●			
Range Rover L322	2002 - 2005	Body - Climate Control	HVAC - Heating Ventilation Air Conditioning Control Module	●	●					
Range Rover L322	2002 - 2005	Body - Body Electrics	GM3	●	●	●	●			
Range Rover L322	2002 - 2005	Body - Security	EWS3	●	●	●	●			
Range Rover L322	2002 - 2005	Body - Fuel Fired Heater	Fuel Fired Heater	●	●	●		●		
Range Rover L322	2002 - 2005	Infotainment - Audio and Video	AAM - Audio Amplifier Module	●	●		●			
Range Rover L322	2002 - 2005	Infotainment - Audio and Video	ACM - Audio Control Module	●	●		●			
Range Rover L322	2002 - 2005	Infotainment - Audio and Video	FEM - Front Electronic Module	●	●		●			
Range Rover L322	2002 - 2005	Infotainment - Audio and Video	CDP - Compact Disc Player	●	●		●			
Range Rover L322	2002 - 2005	Infotainment - Audio and Video	SRM - Satellite Audio Unit Module	●	●		●			
Range Rover L322	2002 - 2005	Infotainment - Audio and Video	TVM - Television Module	●	●		●			
Range Rover L322	2002 - 2005	Infotainment - REM	REM - Rear Entertainment Control Module	●	●		●			
Range Rover L322	2002 - 2005	Infotainment - TEL	TEL - Cellular Telephone Control Module	●	●		●			
Range Rover L322	2002 - 2005	Infotainment - TMC	TMC - Traffic Message Channel Module	●	●		●			
Range Rover L322	2002 - 2005	Service Function - Service Reset	Service Reset							●
Range Rover L322	2006	Drive - Diesel EMS	Bosch DDE4	●	●	●	●	●		
Range Rover L322	2006	Drive - Petrol EMS	Denso PAN PAG	●	●	●	●	●		●
Range Rover L322	2006	Drive - Transmission (Diesel)	GM5 / EGS 20	●	●	●	●	●		
Range Rover L322	2006	Drive - Transmission (Petrol)	TCM - Transmission Control Module	●	●	●	●			●
Range Rover L322	2006	Drive - Transmission	TCCM - Transfer Case Control Module	●	●		●			
Range Rover L322	2006	Chassis - ABS (Diesel)	Bosch 5.7	●	●	●	●			
Range Rover L322	2006	Chassis - ABS (Petrol)	Bosch 8	●	●	●	●			●
Range Rover L322	2006	Chassis - Steering Angle (Diesel)	SASM - Steering Angle Sensor Module	●	●					●
Range Rover L322	2006	Chassis - Steering Angle (Petrol)	SASM - Steering Angle Sensor Module	●	●					●
Range Rover L322	2006	Chassis - TPMS	TPMS - Tyre Pressure Monitoring System	●	●	●	●			
Range Rover L322	2006	Chassis - Air Suspension	RLM - Ride Level Control Module	●	●	●	●	●		●
Range Rover L322	2006	Body - Airbag	MRS 4	●	●		●			
Range Rover L322	2006	Body - Climate Control	HVAC - Heating Ventilation Air Conditioning Control Module	●	●					
Range Rover L322	2006	Body - Body Electrics	GM3	●	●	●	●			
Range Rover L322	2006	Body - Instruments	IPC - Instrument Panel Control Module	●	●		●			●
Range Rover L322	2006	Body - Lighting Control	FLM - Front Lighting Module	●	●		●			
Range Rover L322	2006	Body - Security	Body Controller	●	●		●			
Range Rover L322	2006	Body - Fuel Fired Heater	Fuel Fired Heater	●	●	●		●		
Range Rover L322	2006	Body - RDUM	RDUM - Remote Driver Utility Module	●	●		●			
Range Rover L322	2006	Infotainment - Audio and Video	AAM - Audio Amplifier Module	●	●		●			
Range Rover L322	2006	Infotainment - Audio and Video	ACM - Audio Control Module	●	●		●			
Range Rover L322	2006	Infotainment - Audio and Video	FEM - Front Electronic Module	●	●		●			
Range Rover L322	2006	Infotainment - Audio and Video	CDP - Compact Disc Player	●	●		●			
Range Rover L322	2006	Infotainment - Audio and Video	SRM - Satellite Audio Unit Module	●	●		●			
Range Rover L322	2006	Infotainment - Audio and Video	TVM - Television Module	●	●		●			
Range Rover L322	2006	Infotainment - REM	REM - Rear Entertainment Control Module	●	●		●			
Range Rover L322	2006	Infotainment - TEL	TEL - Cellular Telephone Control Module	●	●		●			
Range Rover L322	2006	Infotainment - TMC	TMC - Traffic Message Channel Module	●	●		●			
Range Rover L322	2006	Service Function - Service Reset	Service Reset							●
Range Rover L322	2007 - 2009	Drive - Diesel EMS	PCM - Power Train Control Module (Diesel)	●	●	●	●			●
Range Rover L322	2007 - 2009	Drive - Petrol EMS	PCM - Power Train Control Module (Petrol)	●	●	●	●			●
Range Rover L322	2007 - 2009	Drive - Transmission	TCM - Transmission Control Module	●	●	●	●			●
Range Rover L322	2007 - 2009	Drive - Transmission	RDCM - Rear Differential Control Module	●	●		●			
Range Rover L322	2007 - 2009	Drive - Transfer Case	TCCM - Transfer Case Control Module	●	●		●			
Range Rover L322	2007 - 2009	Chassis - ABS / DSC	ABS / DSC - Antilocking brake System / Dynamic Stability Control	●	●	●	●			●
Range Rover L322	2007 - 2009	Chassis - Steering Angle	SASM - Steering Angle Sensor Module	●	●					●
Range Rover L322	2007 - 2009	Chassis - Parking Brake	PBM - Park Brake Module	●	●	●	●			●
Range Rover L322	2007 - 2009	Chassis - TPMS	TPMS - Tyre Pressure Monitoring System	●	●	●	●			
Range Rover L322	2007 - 2009	Chassis - ATCM	ATCM - All Terrain Control Module	●	●		●			
Range Rover L322	2007 - 2009	Chassis - Suspension	RLM - Ride Level Control Module	●	●		●	●		●
Range Rover L322	2007 - 2009	Body - Airbag	RCM - Restraints Control Module	●	●	●	●			
Range Rover L322	2007 - 2009	Body - Airbag	OCS - Occupancy Classification System	●	●	●	●			
Range Rover L322	2007 - 2009	Body - Climate Control	HVAC - Heating Ventilation Air Conditioning Control Module	●	●					
Range Rover L322	2007 - 2009	Body - Climate Control	RHVAC - Rear Heating Ventilation Air Conditioning Control Module	●	●		●			
Range Rover L322	2007 - 2009	Body - Body Electrics	GM3	●	●	●	●			
Range Rover L322	2007 - 2009	Body - Instruments	IPC - Instrument Panel Control Module	●	●		●			●
Range Rover L322	2007 - 2009	Body - Lighting Control	FLM - Front Lighting Module	●	●		●			
Range Rover L322	2007 - 2009	Body - Security	Immobiliser	●	●		●			
Range Rover L322	2007 - 2009	Body - Fuel Fired Heater	FFH - Fuel Fired Heater	●	●	●	●			
Range Rover L322	2007 - 2009	Body - Seating	DSCSM - Drivers Climate Seat Module	●	●		●			
Range Rover L322	2007 - 2009	Body - RBM	RBM - Running Board Control Module	●	●		●			
Range Rover L322	2007 - 2009	Body - RDUM	RDUM - Remote Driver Utility Module	●	●		●			
Range Rover L322	2007 - 2009	Infotainment - Audio and Video	AAM - Audio Amplifier Module	●	●		●			
Range Rover L322	2007 - 2009	Infotainment - Audio and Video	ACM - Audio Control Module	●	●		●			
Range Rover L322	2007 - 2009	Infotainment - Audio and Video	FEM - Front Electronic Module	●	●		●			
Range Rover L322	2007 - 2009	Infotainment - Audio and Video	CDP - Compact Disc Player	●	●		●			
Range Rover L322	2007 - 2009	Infotainment - Audio and Video	SRM - Satellite Audio Unit Module	●	●		●			
Range Rover L322	2007 - 2009	Infotainment - Audio and Video	TVM - Television Module	●	●		●			
Range Rover L322	2007 - 2009	Infotainment - REM	REM - Rear Entertainment Control Module	●	●		●			

Lynx Vehicle Coverage - continued

Key
● Existing feature
● Enhanced feature
● New feature

Vehicle Model	Years	System	System Name	Read Fault Codes	Clear Fault Codes	Live Data	ECM Data	Actuators	Programming	Maintenance
Range Rover L322	2007 - 2009	Infotainment - TEL	TEL - Cellular Telephone Control Module	●	●		●			
Range Rover L322	2007 - 2009	Infotainment - TMC	TMC - Traffic Message Channel Module	●	●		●			
Range Rover L322	2007 - 2009	Service Functions - Service Reset	IPC - Instrument Panel Control Module							●
Range Rover L322	2010 - 2012	Diesel - V8 3.6 - Engine	PCM - Power Train Control Module (Diesel)	●	●	●	●			●
Range Rover L322	2010 - 2012	Diesel - V8 3.6 - Transmission	TCM - Transmission Control Module	●	●	●	●			
Range Rover L322	2010 - 2012	Diesel - V8 3.6 - Transmission	RDCM - Rear Differential Control Module	●	●		●			
Range Rover L322	2010 - 2012	Diesel - V8 3.6 - Transfer Case	TCCM - Transfer Case Control Module	●		●	●			
Range Rover L322	2010 - 2012	Diesel - V8 3.6 - Adaptive Cruise Control	CCM - Cruise Control Module	●	●	●	●			
Range Rover L322	2010 - 2012	Diesel - V8 4.4 - Engine	PCM - Power Train Control Module (Diesel)	●	●	●	●			●
Range Rover L322	2010 - 2012	Diesel - V8 4.4 - Transmission	TCM - Transmission Control Module	●	●	●	●			
Range Rover L322	2010 - 2012	Diesel - V8 4.4 - Transmission	GSM - Gear Shift Module	●	●	●	●			
Range Rover L322	2010 - 2012	Diesel - V8 4.4 - Transmission	RDCM - Rear Differential Control Module	●	●		●			
Range Rover L322	2010 - 2012	Diesel - V8 4.4 - Transfer Case	TCCM - Transfer Case Control Module	●		●	●			
Range Rover L322	2010 - 2012	Diesel - V8 4.4 - Adaptive Cruise Control	CCM - Cruise Control Module	●	●	●	●			
Range Rover L322	2010 - 2012	Petrol - Engine	PCM - Power Train Control Module (Petrol)	●	●	●	●			
Range Rover L322	2010 - 2012	Petrol - Transmission	TCM - Transmission Control Module	●	●	●	●			
Range Rover L322	2010 - 2012	Petrol - Transmission	RDCM - Rear Differential Control Module	●	●		●			
Range Rover L322	2010 - 2012	Petrol - Transfer Case	TCCM - Transfer Case Control Module	●		●	●			
Range Rover L322	2010 - 2012	Petrol - Adaptive Cruise Control	CCM - Cruise Control Module	●	●	●	●			
Range Rover L322	2010 - 2012	Chassis - ABS / DSC	ABS / DSC - Antilocking brake System / Dynamic Stability Control	●	●	●	●			●
Range Rover L322	2010 - 2012	Chassis - Steering Angle	SASM - Steering Angle Sensor Module	●	●	●	●			●
Range Rover L322	2010 - 2012	Chassis - Parking Brake	PBM - Park Brake Module	●	●	●	●			●
Range Rover L322	2010 - 2012	Chassis - Suspension	RLM - Ride Level Control Module	●	●	●	●			●
Range Rover L322	2010 - 2012	Chassis - Suspension	ADCM - Adaptive Damping Control Module	●	●	●	●			
Range Rover L322	2010 - 2012	Chassis - Chassis	ATCM - All Terrain Control Module	●	●	●	●			
Range Rover L322	2010 - 2012	Body - Airbag	RCM - Restraints Control Module	●	●	●	●			
Range Rover L322	2010 - 2012	Body - Airbag	OCS - Occupancy Classification System	●	●	●	●			
Range Rover L322	2010 - 2012	Body - Climate Control	HVAC - Heating Ventilation Air Conditioning Control Module	●	●	●	●			
Range Rover L322	2010 - 2012	Body - Climate Control	RHVAC - Rear Heating Ventilation Air Conditioning Control Module	●	●	●	●			
Range Rover L322	2010 - 2012	Body - Body Controller	BCM - Body Control Module	●	●	●	●			●
Range Rover L322	2010 - 2012	Body - Instruments	IPC - Instrument Panel Control Module	●	●	●	●			●
Range Rover L322	2010 - 2012	Body - Lighting Control	HCM - Headlamp Control Module	●	●	●	●			
Range Rover L322	2010 - 2012	Body - Lighting Control	HCMB - Headlamp Control Module 'B'	●	●	●	●			
Range Rover L322	2010 - 2012	Body - Parking Aid	PAM - Parking Aid Module	●	●	●	●			
Range Rover L322	2010 - 2012	Body - Object Detection	SODL - Side Object Detection Module Left	●	●	●	●			
Range Rover L322	2010 - 2012	Body - Object Detection	SODR - Side Object Detection Module Right	●	●	●	●			
Range Rover L322	2010 - 2012	Body - Immobiliser	Immobiliser	●	●	●	●			
Range Rover L322	2010 - 2012	Body - Fuel-Fired Heater	FFH - Fuel Fired Heater	●	●	●	●			
Range Rover L322	2010 - 2012	Body - Seating	DSM - Drivers Seat Module	●	●	●	●			
Range Rover L322	2010 - 2012	Body - Seating	PSM - Passengers Seat Module	●	●	●	●			
Range Rover L322	2010 - 2012	Body - Seating	DCSM - Drivers Climate Seat Module	●	●	●	●			
Range Rover L322	2010 - 2012	Body - Seating	RDCSM - Rear Climate Seat Module	●	●	●	●			
Range Rover L322	2010 - 2012	Body - Doors	DDM - Drivers Door Module	●	●	●	●			
Range Rover L322	2010 - 2012	Body - Doors	PDM - Passengers Door Module	●	●	●	●			
Range Rover L322	2010 - 2012	Body - KVM	KVM - Keyless Vehicle Module	●	●	●	●			
Range Rover L322	2010 - 2012	Body - RBM	RBM - Running Board Control Module	●	●	●	●			
Range Rover L322	2010 - 2012	Body - RDUM	RDUM - Remote Driver Utility Module	●	●	●	●			
Range Rover L322	2010 - 2012	Infotainment - Audio and Video	AAM - Audio Amplifier Module	●	●	●	●			
Range Rover L322	2010 - 2012	Infotainment - Audio and Video	ACM - Audio Control Module	●	●	●	●			
Range Rover L322	2010 - 2012	Infotainment - Audio and Video	FEM - Front Electronic Module	●	●	●	●			
Range Rover L322	2010 - 2012	Infotainment - Audio and Video	CDP - Compact Disc Player	●	●	●	●			
Range Rover L322	2010 - 2012	Infotainment - Audio and Video	DABM - Digital Audio Broadcast Module	●	●	●	●			
Range Rover L322	2010 - 2012	Infotainment - Audio and Video	DACMC - Digital Audio Control Module 'C'	●	●	●	●			
Range Rover L322	2010 - 2012	Infotainment - Audio and Video	SRM - Satellite Audio Unit Module	●	●	●	●			
Range Rover L322	2010 - 2012	Infotainment - Audio and Video	TVM - Television Module	●	●	●	●			
Range Rover L322	2010 - 2012	Infotainment - APIM	APIM - Accessory Protocol Interface Module	●	●	●	●			
Range Rover L322	2010 - 2012	Infotainment - REM	REM - Rear Entertainment Control Module	●	●	●	●			
Range Rover L322	2010 - 2012	Infotainment - TEL	TEL - Cellular Telephone Control Module	●	●	●	●			
Range Rover L322	2010 - 2012	Infotainment - IPMB	IPMB - Image Processing Module 'B'	●	●	●	●			
Range Rover L322	2010 - 2012	Service Functions - Service Reset	IPC - Instrument Panel Control Module							●
Range Rover L322	2010 - 2012	Global Function - Clear DTCs	High Speed CAN Clear DTCs		●					
Range Rover L322	2010 - 2012	Global Function - Clear DTCs	Medium Speed CAN Clear DTCs		●					
Range Rover L322	2010 - 2012	Global Functions - ECU Reset	High Speed CAN ECU Reset							●
Range Rover L322	2010 - 2012	Global Functions - ECU Reset	Medium Speed CAN ECU Reset							●
Range Rover Sport	2005 - 2009	Drive - Diesel EMS	PCM - Power Train Control Module (Diesel)	●	●	●	●	●		●
Range Rover Sport	2005 - 2009	Drive - Petrol EMS	PCM - Power Train Control Module (Petrol)	●	●	●	●			
Range Rover Sport	2005 - 2009	Drive - Transmission	TCM - Transmission Control Module	●	●	●	●			●
Range Rover Sport	2005 - 2009	Drive - Transmission	RDCM - Rear Differential Control Module	●	●		●			
Range Rover Sport	2005 - 2009	Drive - Transfer Case	TCCM - Transfer Case Control Module	●	●	●	●			
Range Rover Sport	2005 - 2009	Drive - Adaptive Cruise Control	CCM - Cruise Control Module	●	●	●	●			
Range Rover Sport	2005 - 2009	Chassis - ABS / DSC	ABS / DSC - Antilocking brake System / Dynamic Stability Control	●	●	●	●			●
Range Rover Sport	2005 - 2009	Chassis - Steering Angle	SASM - Steering Angle Sensor Module	●	●	●	●			●
Range Rover Sport	2005 - 2009	Chassis - Parking Brake	PBM - Park Brake Module	●	●	●	●			●
Range Rover Sport	2005 - 2009	Chassis - TPMS	TPMS - Tyre Pressure Monitoring System	●	●	●	●			
Range Rover Sport	2005 - 2009	Chassis - ARCM	ARCM - Dynamic Response Module	●	●	●	●			
Range Rover Sport	2005 - 2009	Chassis - ATCM	ATCM - All Terrain Control Module	●	●	●	●			
Range Rover Sport	2005 - 2009	Chassis - Suspension	RLM - Ride Level Control Module	●	●	●	●			●
Range Rover Sport	2005 - 2009	Body - Airbag	RCM - Restraints Control Module	●	●	●	●			
Range Rover Sport	2005 - 2009	Body - Climate Control	HVAC - Heating Ventilation Air Conditioning Control Module	●	●	●	●			
Range Rover Sport	2005 - 2009	Body - Body Controller	BCM - Body Control Module	●	●	●	●			●
Range Rover Sport	2005 - 2009	Body - Instruments	IPC - Instrument Panel Control Module	●	●	●	●			●

Lynx Vehicle Coverage - continued

Key
● Existing feature
● Enhanced feature
● New feature

Vehicle Model	Years	System	System Name	Read Fault Codes	Clear Fault Codes	Live Data	ECM Data	Actuators	Programming	Maintenance
Range Rover Sport	2005 - 2009	Body - Lighting Control	FLM - Front Lighting Module	●	●		●			
Range Rover Sport	2005 - 2009	Body - Parking Aid	PAM - Parking Aid Module	●	●	●	●			
Range Rover Sport	2005 - 2009	Body - Fuel Fired Heater	FFH - Fuel Fired Heater	●	●	●	●			
Range Rover Sport	2005 - 2009	Infotainment - Audio and Video	AAM - Audio Amplifier Module	●	●		●			
Range Rover Sport	2005 - 2009	Infotainment - Audio and Video	ACM - Audio Control Module	●	●		●			
Range Rover Sport	2005 - 2009	Infotainment - Audio and Video	FEM - Front Electronic Module	●	●		●			
Range Rover Sport	2005 - 2009	Infotainment - Audio and Video	DACMC - Digital Audio Control Module 'C'	●	●		●			
Range Rover Sport	2005 - 2009	Infotainment - Audio and Video	SRM - Satellite Audio Unit Module	●	●		●			
Range Rover Sport	2005 - 2009	Infotainment - Audio and Video	TVM - Television Module	●	●		●			
Range Rover Sport	2005 - 2009	Infotainment - REM	REM - Rear Entertainment Control Module	●	●		●			
Range Rover Sport	2005 - 2009	Infotainment - TEL	TEL - Cellular Telephone Control Module	●	●		●			
Range Rover Sport	2005 - 2009	Infotainment - TMC	TMC - Traffic Message Channel Module	●	●		●			
Range Rover Sport	2005 - 2009	Service Functions - Service Reset	IPC - Instrument Panel Control Module							●
Range Rover Sport	2005 - 2009	Global Function - Clear DTCs	High Speed CAN Clear DTCs		●					
Range Rover Sport	2005 - 2009	Global Function - Clear DTCs	Medium Speed CAN Clear DTCs		●					
Range Rover Sport	2005 - 2009	Global Functions - ECU Reset	High Speed CAN ECU Reset							●
Range Rover Sport	2005 - 2009	Global Functions - ECU Reset	Medium Speed CAN ECU Reset							●
Range Rover Sport	2010 - 2011	Drive - Diesel EMS	PCM - Power Train Control Module (Diesel V6)	●	●	●	●			●
Range Rover Sport	2010 - 2011	Drive - Diesel EMS	PCM - Power Train Control Module (Diesel V8)	●	●	●	●			●
Range Rover Sport	2010 - 2011	Drive - Petrol EMS	PCM - Power Train Control Module (Petrol)	●	●	●	●			
Range Rover Sport	2010 - 2011	Drive - Transmission	TCM - Transmission Control Module (Diesel V6)	●	●	●	●			
Range Rover Sport	2010 - 2011	Drive - Transmission	TCM - Transmission Control Module (Diesel V8)	●	●	●	●			
Range Rover Sport	2010 - 2011	Drive - Transmission	TCM - Transmission Control Module (Petrol)	●	●	●	●			
Range Rover Sport	2010 - 2011	Drive - Transmission	RDCM - Rear Differential Control Module	●	●		●			
Range Rover Sport	2010 - 2011	Drive - Transfer Case	TCCM - Transfer Case Control Module	●	●		●			
Range Rover Sport	2010 - 2011	Drive - Adaptive Cruise Control	CCM - Cruise Control Module	●	●		●			
Range Rover Sport	2010 - 2011	Chassis - ABS / DSC	ABS / DSC - Antilocking brake System / Dynamic Stability Control	●	●	●	●			●
Range Rover Sport	2010 - 2011	Chassis - Steering Angle	SASM - Steering Angle Sensor Module	●	●		●			●
Range Rover Sport	2010 - 2011	Chassis - Parking Brake	PBM - Park Brake Module	●	●	●	●			●
Range Rover Sport	2010 - 2011	Chassis - ARCM	ARCM - Dynamic Response Module	●	●		●			
Range Rover Sport	2010 - 2011	Chassis - ATCM	ATCM - All Terrain Control Module	●	●		●			
Range Rover Sport	2010 - 2011	Chassis - Suspension	RLM - Ride Level Control Module	●	●	●	●			●
Range Rover Sport	2010 - 2011	Chassis - Suspension	ADCM - Adaptive Damping Control Module	●	●		●			
Range Rover Sport	2010 - 2011	Body - Airbag	RCM - Restraints Control Module	●	●	●	●			
Range Rover Sport	2010 - 2011	Body - Airbag	OCS - Occupancy Classification System	●	●	●	●			
Range Rover Sport	2010 - 2011	Body - Climate Control	HVAC - Heating Ventilation Air Conditioning Control Module	●	●		●			
Range Rover Sport	2010 - 2011	Body - Body Controller	BCM - Body Control Module	●	●	●	●			●
Range Rover Sport	2010 - 2011	Body - Instruments	IPC - Instrument Panel Control Module	●	●		●			●
Range Rover Sport	2010 - 2011	Body - Lighting Control	HCM - Headlamp Control Module	●	●		●			
Range Rover Sport	2010 - 2011	Body - Lighting Control	HCMB - Headlamp Control Module 'B'	●	●		●			
Range Rover Sport	2010 - 2011	Body - Parking Aid	PAM - Parking Aid Module	●	●	●	●			
Range Rover Sport	2010 - 2011	Body - Immobiliser	Immobiliser	●	●		●			
Range Rover Sport	2010 - 2011	Body - Fuel Fired Heater	FFH - Fuel Fired Heater	●	●	●	●			
Range Rover Sport	2010 - 2011	Body - Seating	DSM - Drivers Seat Module	●	●		●			
Range Rover Sport	2010 - 2011	Body - Doors	DDM - Drivers Door Module	●	●		●			
Range Rover Sport	2010 - 2011	Body - Doors	PDM - Passengers Door Module	●	●		●			
Range Rover Sport	2010 - 2011	Body - KVM	KVM - Keyless Vehicle Module	●	●		●			
Range Rover Sport	2010 - 2011	Infotainment - Audio and Video	AAM - Audio Amplifier Module	●	●		●			
Range Rover Sport	2010 - 2011	Infotainment - Audio and Video	ACM - Audio Control Module	●	●		●			
Range Rover Sport	2010 - 2011	Infotainment - Audio and Video	FEM - Front Electronic Module	●	●		●			
Range Rover Sport	2010 - 2011	Infotainment - Audio and Video	FCIM - Front Control Interface Module	●	●		●			
Range Rover Sport	2010 - 2011	Infotainment - Audio and Video	FCIMB - Front Control Interface Module 'B'	●	●		●			
Range Rover Sport	2010 - 2011	Infotainment - Audio and Video	DABM - Digital Audio Broadcast Module	●	●		●			
Range Rover Sport	2010 - 2011	Infotainment - Audio and Video	SRM - Satellite Audio Unit Module	●	●		●			
Range Rover Sport	2010 - 2011	Infotainment - Audio and Video	TVM - Television Module	●	●		●			
Range Rover Sport	2010 - 2011	Infotainment - APM	APIM - Accessory Protocol Interface Module	●	●		●			
Range Rover Sport	2010 - 2011	Infotainment - REM	REM - Rear Entertainment Control Module	●	●		●			
Range Rover Sport	2010 - 2011	Infotainment - TEL	TEL - Cellular Telephone Control Module	●	●		●			
Range Rover Sport	2010 - 2011	Infotainment - IPMB	IPMB - Image Processing Module 'B'	●	●		●			
Range Rover Sport	2010 - 2011	Service Functions - Service Reset	IPC - Instrument Panel Control Module							●
Range Rover Sport	2010 - 2011	Global Function - Clear DTCs	High Speed CAN Clear DTCs		●					
Range Rover Sport	2010 - 2011	Global Function - Clear DTCs	Medium Speed CAN Clear DTCs		●					
Range Rover Sport	2010 - 2011	Global Functions - ECU Reset	High Speed CAN ECU Reset							●
Range Rover Sport	2010 - 2011	Global Functions - ECU Reset	Medium Speed CAN ECU Reset							●
Range Rover Sport	2012 - 2013	Drive - Diesel EMS	PCM - Power Train Control Module (Diesel)	●	●	●	●			●
Range Rover Sport	2012 - 2013	Drive - Petrol EMS	PCM - Power Train Control Module (Petrol)	●	●	●	●			
Range Rover Sport	2012 - 2013	Drive - Transmission	TCM - Transmission Control Module (Diesel V6)	●	●	●	●			
Range Rover Sport	2012 - 2013	Drive - Transmission	TCM - Transmission Control Module (Diesel V8)	●	●	●	●			
Range Rover Sport	2012 - 2013	Drive - Transmission	TCM - Transmission Control Module (Petrol)	●	●	●	●			
Range Rover Sport	2012 - 2013	Drive - Transmission	GSM - Gear Shift Module	●	●		●			
Range Rover Sport	2012 - 2013	Drive - Transmission	RDCM - Rear Differential Control Module	●	●		●			
Range Rover Sport	2012 - 2013	Drive - Transfer Case	TCCM - Transfer Case Control Module	●	●		●			
Range Rover Sport	2012 - 2013	Drive - Adaptive Cruise Control	CCM - Cruise Control Module	●	●		●			
Range Rover Sport	2012 - 2013	Chassis - ABS / DSC	ABS / DSC - Antilocking brake System / Dynamic Stability Control	●	●	●	●			●
Range Rover Sport	2012 - 2013	Chassis - Steering Angle	SASM - Steering Angle Sensor Module	●	●		●			●
Range Rover Sport	2012 - 2013	Chassis - Parking Brake	PBM - Park Brake Module	●	●	●	●			●
Range Rover Sport	2012 - 2013	Chassis - ARCM	ARCM - Dynamic Response Module	●	●		●			
Range Rover Sport	2012 - 2013	Chassis - ATCM	ATCM - All Terrain Control Module	●	●		●			
Range Rover Sport	2012 - 2013	Chassis - Suspension	RLM - Ride Level Control Module	●	●	●	●			●
Range Rover Sport	2012 - 2013	Chassis - Suspension	ADCM - Adaptive Damping Control Module	●	●		●			
Range Rover Sport	2012 - 2013	Body - Airbag	RCM - Restraints Control Module	●	●	●	●			

Lynx Vehicle Coverage - continued

Key
 ● Existing feature
 ● Enhanced feature
 ● New feature

Vehicle Model	Years	System	System Name	Read Fault Codes	Clear Fault Codes	Live Data	ECM Data	Actuators	Programming	Maintenance
Range Rover Sport	2012 - 2013	Body - Airbag	OCS - Occupancy Classification System	●	●	●	●			
Range Rover Sport	2012 - 2013	Body - Climate Control	HVAC - Heating Ventilation Air Conditioning Control Module	●	●		●			
Range Rover Sport	2012 - 2013	Body - Body Controller	BCM - Body Control Module	●	●	●	●			●
Range Rover Sport	2012 - 2013	Body - Instruments	IPC - Instrument Panel Control Module	●	●		●			●
Range Rover Sport	2012 - 2013	Body - Lighting Control	HCM - Headlamp Control Module	●	●		●			
Range Rover Sport	2012 - 2013	Body - Lighting Control	HCMB - Headlamp Control Module 'B'	●	●		●			
Range Rover Sport	2012 - 2013	Body - Parking Aid	PAM - Parking Aid Module	●	●	●	●			
Range Rover Sport	2012 - 2013	Body - Immobiliser	Immobiliser	●	●		●			
Range Rover Sport	2012 - 2013	Body - Fuel Fired Heater	FFH - Fuel Fired Heater	●	●	●	●			
Range Rover Sport	2012 - 2013	Body - Seating	DSM - Drivers Seat Module	●	●		●			
Range Rover Sport	2012 - 2013	Body - Doors	DDM - Drivers Door Module	●	●		●			
Range Rover Sport	2012 - 2013	Body - Doors	PDM - Passengers Door Module	●	●		●			
Range Rover Sport	2012 - 2013	Body - KVM	KVM - Keyless Vehicle Module	●	●		●			
Range Rover Sport	2012 - 2013	Body - RGTM	RGTM - Rear Gate/Trunk Module	●	●		●			
Range Rover Sport	2012 - 2013	Infotainment - Audio and Video	FCDIM - Front Control/Display Interface Module	●	●		●			
Range Rover Sport	2012 - 2013	Infotainment - Audio and Video	FCIM - Front Control Interface Module	●	●		●			
Range Rover Sport	2012 - 2013	Infotainment - Audio and Video	FCIMB - Front Control Interface Module 'B'	●	●		●			
Range Rover Sport	2012 - 2013	Infotainment - IPMB	IPMB - Image Processing Module 'B'	●	●		●			
Range Rover Sport	2012 - 2013	Service Functions - Service Reset	IPC - Instrument Panel Control Module							●
Range Rover Sport	2012 - 2013	Global Function - Clear DTCs	High Speed CAN Clear DTCs		●					
Range Rover Sport	2012 - 2013	Global Function - Clear DTCs	Medium Speed CAN Clear DTCs		●					
Range Rover Sport	2012 - 2013	Global Functions - ECU Reset	High Speed CAN ECU Reset						●	
Range Rover Sport	2012 - 2013	Global Functions - ECU Reset	Medium Speed CAN ECU Reset						●	
Range Rover Evoque	2012 -	Drive - Diesel EMS	PCM - Power Train Control Module (Diesel)	●	●	●	●			●
Range Rover Evoque	2012 -	Drive - Petrol EMS	PCM - Power Train Control Module (Petrol)	●	●	●	●			
Range Rover Evoque	2012 -	Drive - Transmission	TCM - Transmission Control Module	●	●		●			●
Range Rover Evoque	2012 -	Drive - Transmission	GSM - Gear Shift Module	●	●		●			
Range Rover Evoque	2012 -	Drive - Transmission	GSMB - Gear Shift Module 'B'	●	●		●			
Range Rover Evoque	2012 -	Drive - Transmission	RDCM - Rear Differential Control Module	●	●		●			
Range Rover Evoque	2012 -	Chassis - ABS/DSC	ABS / DSC - Antilocking brake System / Dynamic Stability Control	●	●	●	●			
Range Rover Evoque	2012 -	Chassis - Steering Angle	SASM - Steering Angle Sensor Module	●	●	●	●			
Range Rover Evoque	2012 -	Chassis - Parking Brake	PBM - Park Brake Module							●
Range Rover Evoque	2012 -	Chassis - Power Steering	PSCM - Power Steering Control Module	●	●		●			
Range Rover Evoque	2012 -	Chassis - Suspension	ADCM - Adaptive Damping Control Module	●	●		●			
Range Rover Evoque	2012 -	Chassis - ATCM	ATCM - All Terrain Control Module	●	●		●			
Range Rover Evoque	2012 -	Body - Airbag	RCM - Restraints Control Module	●	●		●			
Range Rover Evoque	2012 -	Body - Airbag	OCS - Occupancy Classification System	●	●	●	●			
Range Rover Evoque	2012 -	Body - Climate Control	HVAC - Heating Ventilation Air Conditioning Control Module	●	●		●			
Range Rover Evoque	2012 -	Body - Body Controller	BCM - Body Control Module	●	●		●			●
Range Rover Evoque	2012 -	Body - Instruments	IPC - Instrument Panel Control Module	●	●		●			●
Range Rover Evoque	2012 -	Body - Lighting Control	HCM - Headlamp Control Module	●	●		●			
Range Rover Evoque	2012 -	Body - Lighting Control	HCMB - Headlamp Control Module 'B'	●	●		●			
Range Rover Evoque	2012 -	Body - Parking Aid	PAM - Parking Aid Module	●	●		●			
Range Rover Evoque	2012 -	Body - Object Detection	SODL - Side Object Detection Control Module - Left	●	●		●			
Range Rover Evoque	2012 -	Body - Object Detection	SODR - Side Object Detection Control Module - Right	●	●		●			
Range Rover Evoque	2012 -	Body - Immobiliser	BCM - Body Control Module	●	●		●			
Range Rover Evoque	2012 -	Body - Fuel-Fired Heater	FFH - Fuel Fired Heater	●	●		●			
Range Rover Evoque	2012 -	Body - Seating	DSM - Drivers Seat Module	●	●		●			
Range Rover Evoque	2012 -	Body - Seating	PSM - Passenger Seat Module	●	●		●			
Range Rover Evoque	2012 -	Body - Doors	DDM - Drivers Door Module	●	●		●			
Range Rover Evoque	2012 -	Body - Doors	PDM - Passengers Door Module	●	●		●			
Range Rover Evoque	2012 -	Body - KVM	KVM - Keyless Vehicle Module	●	●		●			
Range Rover Evoque	2012 -	Body - RGTM	RGTM - Rear Gate/Trunk Module	●	●		●			
Range Rover Evoque	2012 -	Infotainment - Audio and Video	AAM - Audio Amplifier Module	●	●		●			
Range Rover Evoque	2012 -	Infotainment - Audio and Video	ACM - Audio Control Module	●	●		●			
Range Rover Evoque	2012 -	Infotainment - Audio and Video	FCDM - Front Control / Display Interface Module	●	●		●			
Range Rover Evoque	2012 -	Infotainment - Audio and Video	FCIMB - Front Control Interface Module 'B'	●	●		●			
Range Rover Evoque	2012 -	Infotainment - Audio and Video	DABM - Digital Audio Broadcast Module	●	●		●			
Range Rover Evoque	2012 -	Infotainment - Audio and Video	SRM - Satellite Audio Unit Module	●	●		●			
Range Rover Evoque	2012 -	Infotainment - Audio and Video	TVM - Television Module	●	●		●			
Range Rover Evoque	2012 -	Infotainment - REM	REM - Rear Entertainment Module	●	●		●			
Range Rover Evoque	2012 -	Infotainment - IPMB	IPMB - Image Processing Module 'B'	●	●		●			
Range Rover Evoque	2012 -	Service Function - Service Reset	IPC - Instrument Panel Control Module							●
Range Rover Evoque	2012 -	Global Function - Clear DTCs	High Speed CAN Clear DTCs		●					
Range Rover Evoque	2012 -	Global Function - Clear DTCs	Medium Speed CAN Clear DTCs		●					
Range Rover Evoque	2012 -	Global Functions - ECU Reset	High Speed CAN ECU Reset							●
Range Rover Evoque	2012 -	Global Functions - ECU Reset	Medium Speed CAN ECU Reset							●

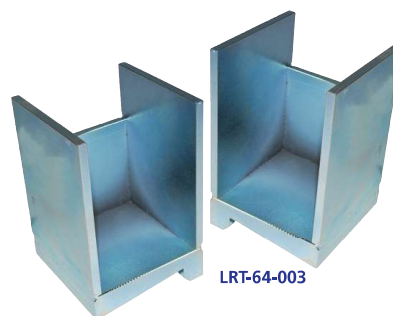
Calibration Tools

To help with air suspension calibration we also offer these calibration blocks which can be used in conjunction with our Lynx diagnostics kit.

- LRT-64-003** Discovery 2
- LRT-60-003** Range Rover P38



LRT-60-003



LRT-64-003