



## Transmission Control Module (TCM) (44.15.46)

### Special Service Tools




ZF Automatic transmission valve block seals remover  
307-492 (LRT-44-005)

### Removal

#### NOTE :


The transmission control module (TCM) is part of the main control valve body and cannot be serviced separately.

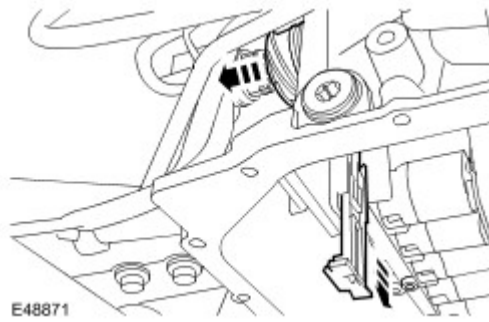
1.  **WARNING: Do not work on or under a vehicle supported only by a jack. Always support the vehicle on safety stands.**

Raise and support the vehicle.

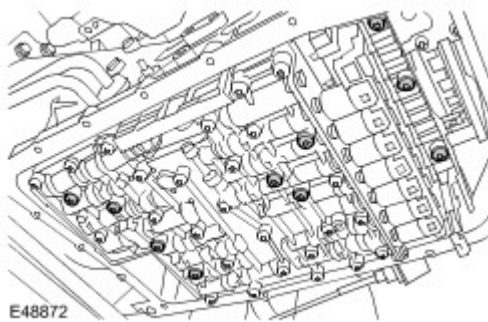
2. Remove the fluid pan. For additional information, refer to [Fluid Pan, Gasket and Filter \(44.24.04\)](#) (Section 307-01)
3. Disconnect the electrical connector.



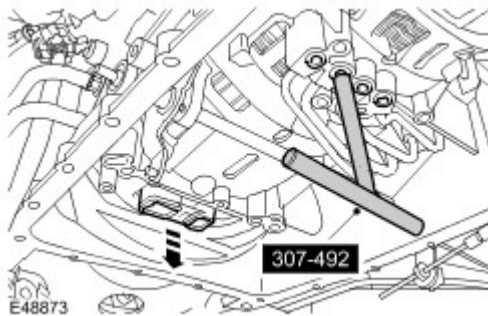
4. Remove and discard the electrical connector sleeve.  
 Release the retainer.





5. Remove the valve body.
  - ▶ Position a container to collect spillage.
  - ▶ Remove the 10 Torx screws.



6. Using the special tool, remove the 4 seals.
7. Remove the seal block.



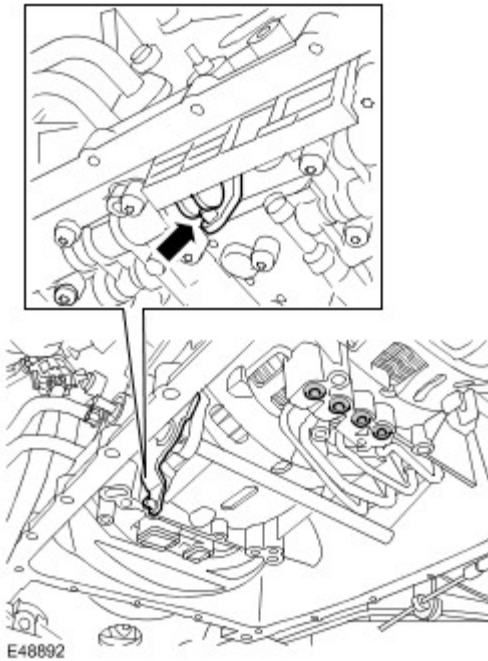
## Installation

1.  **CAUTION: Make sure that when fully fitted, all seals protrude by the same amount.**
-  **CAUTION: Engage the selector lever with the groove in the piston rod.**

Install the valve body.

- ▶ Clean the component mating faces.

- ▶ Install new seals.
- ▶ Install a new seal block.
- ▶ Tighten the Torx screws to 8 Nm (6 lb.ft).



2. Install a new electrical connector sleeve.
  - ▶ Secure with retainer.
3. Connect the electrical connector.
4. Install the fluid pan. For additional information, refer to [Fluid Pan, Gasket and Filter \(44.24.04\)](#) (Section 307-01)
5. Calibrate a new main control valve body using T4.