

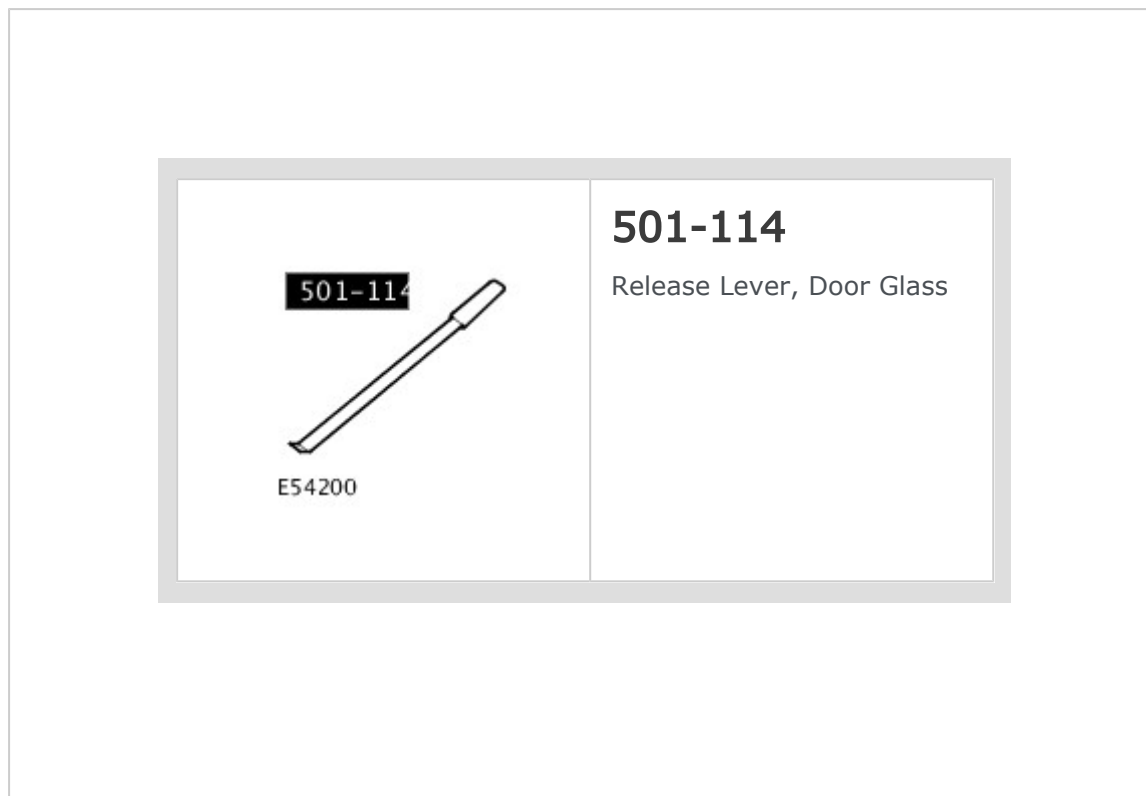
PUBLISHED: 09-JAN-2017  
2017.0 DISCOVERY (LR), 501-11

GLASS, FRAMES AND MECHANISMS

# FRONT DOOR WINDOW (G1985064)

REMOVAL AND INSTALLATION

## SPECIAL TOOL(S)

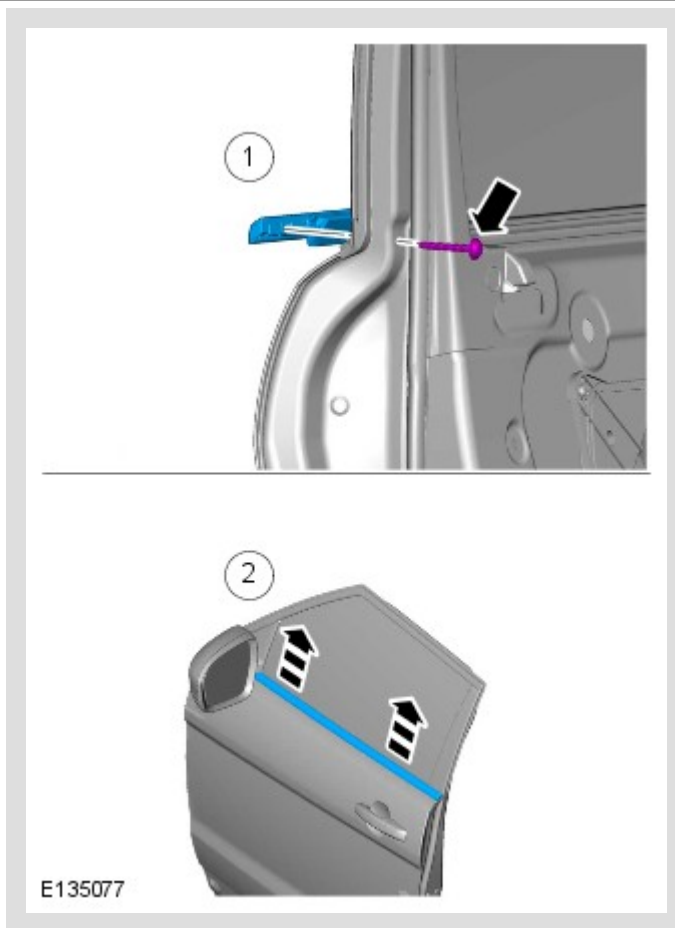


## REMOVAL

### NOTE:

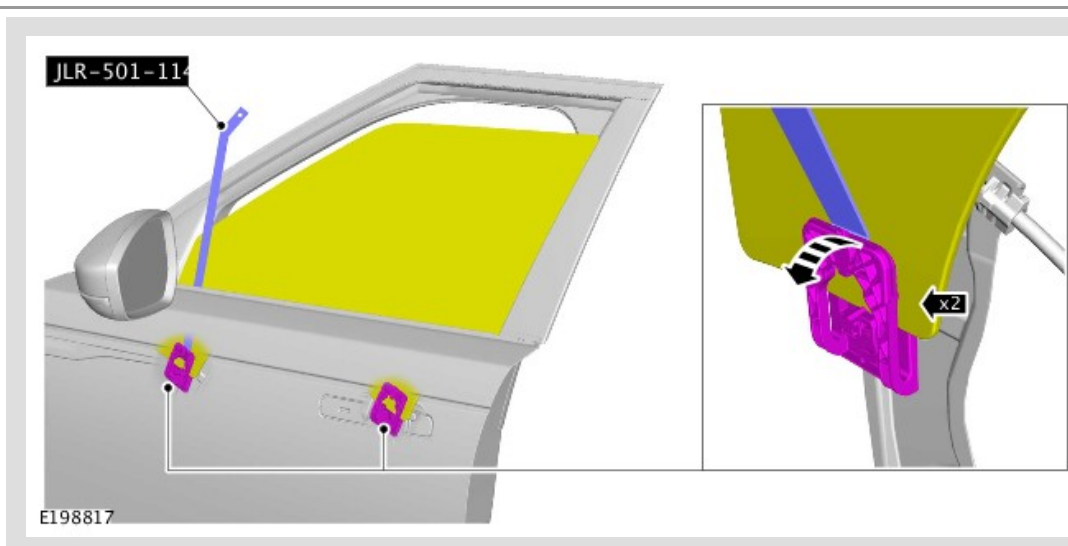
Removal steps in this procedure may contain installation details.

1.



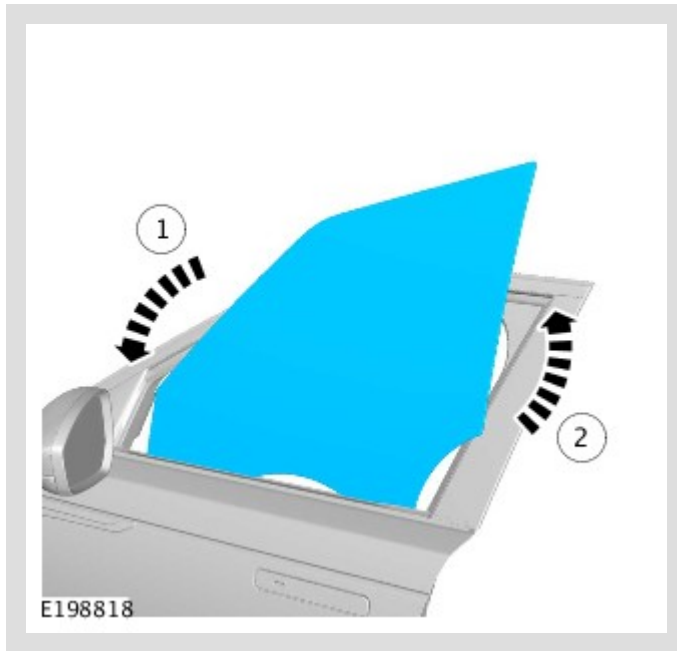
- Remove the screw.  
*Torque: 2 Nm*
- Remove the waist seal.

2.



- Release the front door window from the regulator assembly.  
*Special Tool(s): [501-114](#)*

3.



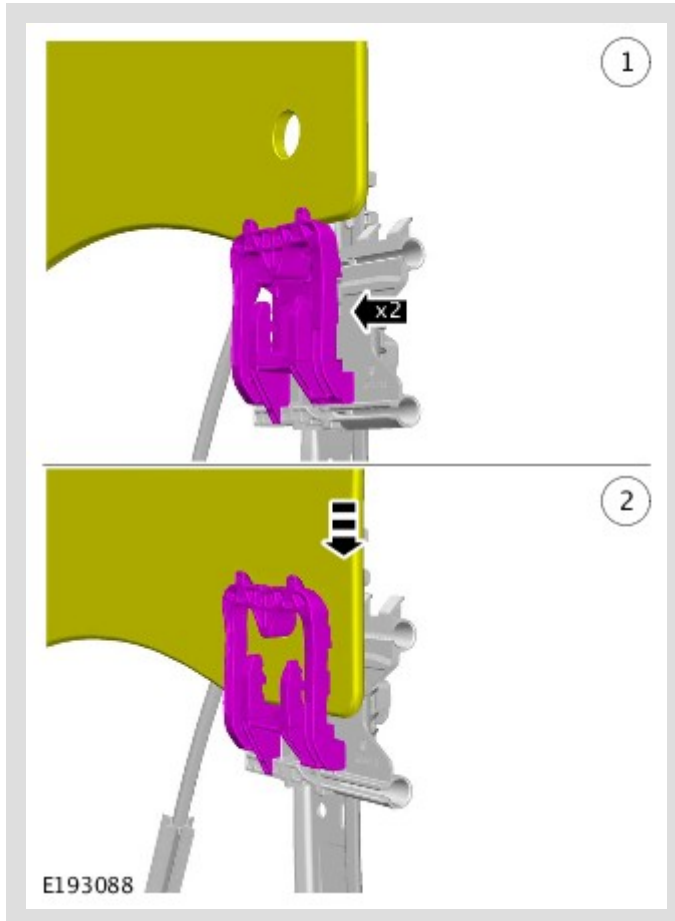
Remove the front door window.

## INSTALLATION

1.

**⚠ CAUTION:**

Two audible clicks are heard when the clips are fully located.



- To install, reverse the removal procedure.